

7 Vampire St, Schofields, NSW 2762

House For Rent

Monday, 13 May 2024



7 Vampire St, Schofields, NSW 2762

Bedrooms: 4

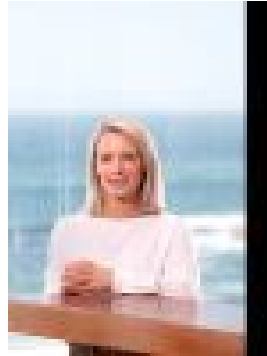
Bathrooms: 3

Parkings: 2

Type: House



Georgina Wilson
1800006272



Jess Williams
1800006272

\$850 per week

Nestled in one of the most sought-after pockets of Schofields, within the ever-popular Akuna Vista, this ultra-modern home boasts elegance and has been meticulously designed to cater to every aspect of luxury living. From the convenience of having a range of amenities just moments away to offering the perfect opportunity for multigenerational families. This exquisite property effortlessly blends modern elegance with functional designs, as well as high-quality inclusions throughout. Boasting an exceptional open-plan layout with a seamless flow from the gourmet kitchen to the inviting living and dining areas it is ideal for hosting gatherings and creating lasting memories. Not to mention the abundance of natural light through the large windows flowing between spaces and out through to the spacious backyard. The beautifully presented kitchen features high-end quality stainless steel appliances, stone benchtops, a gas cooktop and a 900mm oven, tile splashbacks, stylish lights, an eat-in breakfast bar and an ample amount of storage space to elevate your cooking experience. The accommodation consists of four great-sized bedrooms, three of which have built-in robes. There is a bedroom and a full bathroom downstairs ideal for extended families. The master bedroom is a true retreat, complete with a private ensuite bathroom, and walk-in wardrobe. The bathrooms all feature floor-to-ceiling designer tiles and the main bath also features a freestanding bathtub. Features you will love:- Brand New Home- LED lights throughout the home- Multi-zoned ducted air-conditioning, upgraded to be adjustable for every room- Tiled flooring downstairs- Undercover outdoor alfresco and low-maintenance backyard- Double remote-controlled lockup garage- Built-in oven & dishwasher- Security Alarm system installed Location highlights:- Right opposite Nirimba Fields Primary School which is now open- 5 minutes drive to Schofields Train Station and Schofields Shopping Village- Within a 1-minute walk to the upcoming Akuna Vista Parks, playfield, school and shopping centre- 8 minutes drive to Tallawong Metro Station- 10 minutes drive to Rouse Hill Town Centre- Easy access to M7 Motorway and Sydney CBD Disclaimer: All information contained herein is obtained from property owners or third-party sources which we believe are reliable. We have no reason to doubt its accuracy, however, we cannot guarantee it. All interested person/s should rely on their enquiries.