

7 Wattle Close, Gloucester, NSW 2422

House For Sale

Thursday, 16 May 2024

7 Wattle Close, Gloucester, NSW 2422

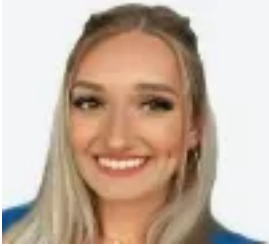
Bedrooms: 3

Bathrooms: 1

Parkings: 2

Area: 797 m2

Type: House



Savannah Lubke

\$560,000

Beautifully presented 3-bedroom brick home on a generous 797m² block. This home features uninterrupted views of the Mograni Ranges from the back deck and BBQ area / entertaining area. The lounge room features a combustion fireplace for those chilly winter nights. This home is ideal for families, investors and even downsizers. FEATURES- 3 bedrooms 2 with built in wardrobes- 1 bathroom with a separate toilet- Well-appointed spacious kitchen with plenty of cupboard space and a dishwasher- 1 car garage and a carport- Fully fenced 787m² block- Amazing BBQ / entertaining area which includes a slow combustion fireplace and BBQ- Very generous deck at your back door to take in the views- A/C in living area and main bedroom, plus ceiling fans in living room and 2nd and 3rd bedrooms- 6 kw solar panel system