

70 Peninsular Road, Grays Point, NSW 2232



Sold House

Wednesday, 13 September 2023

70 Peninsular Road, Grays Point, NSW 2232

Bedrooms: 4

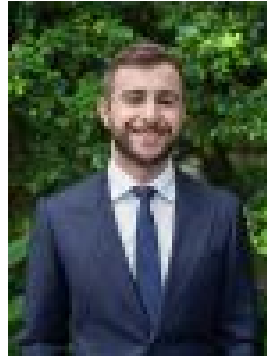
Bathrooms: 2

Parkings: 1

Type: House



Dino Salvatore
0295258066



Marcus Salvatore
0433388862

Contact agent

Nestled amongst the tree-tops on the high side of the street, this elevated east-facing family haven awaits & offers a relaxed lifestyle in a serene setting. The home sprawls over two accommodating levels & features four spacious bedrooms, an eat-in kitchen, sundrenched living areas with panoramic leafy views & a level grassed yard out the back. Plus, the outdoor terraces have been designed to capture the enchanting flora of Grays Point & provide the ultimate luxury of peaceful privacy.

- Front & rear entertaining terraces overlooking lush greenery & mature gardens
- Spacious living room with built-in cabinetry & large windows capturing treetop views
- Separate dining & sunroom with split system air conditioning & combustion fireplace
- Large kitchen with combined meals area, ample bench space & timber cabinetry
- Three generous bedrooms with built-ins, main with walk-in & balcony access
- Modern main bathroom + internal laundry with extra shower & toilet
- Additional family room & home office/optional fourth bedroom downstairs

Level grassed yard with clothesline, gardens & side access to reserve

- Single lock up garage with workshop & storage + extra off-street parking for multiple vehicles
- Approximate Land Size: 788sqm

This hidden gem is only moments from everything Grays Point has to offer including Jack Gray Cafe, local waterways, Swallow Rock Boat Ramp, Royal National Park, Grays Point Public School & in the Kirrawee High School catchment. *Disclaimer: Photos include virtual furniture*