

703/40 Shoreline Drive, Rhodes, NSW 2138



Sold Apartment

Friday, 3 May 2024

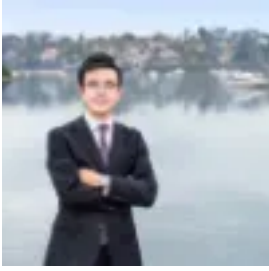
703/40 Shoreline Drive, Rhodes, NSW 2138

Bedrooms: 2

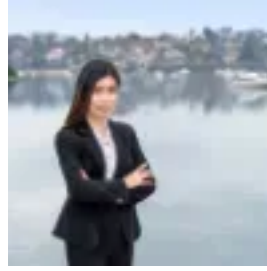
Bathrooms: 2

Parkings: 1

Type: Apartment



Kalaney Che
0422273658



Angell Yang
0434259336

\$1,245,000

This luxurious apartment at Crowns' waterfront resort 'Sanctum' offers an unparalleled living experience with its prime location and stunning amenities. Positioned perfectly at the water's edge, residents can enjoy breathtaking, unobstructed views that will never be compromised by future developments. Residents can enjoy access to a well-equipped gym, security intercom system, and a designer foyer and garden, enhancing the overall lifestyle experience. The apartment's prime location offers easy access to Rhodes train station, Rhodes Central shopping Centre, and Rhodes Waterside Shopping Centre, providing ample shopping and dining options within walking distance. Additionally, the proximity to waterfront parklands of the Rhodes Peninsula, Wentworth Point, and Homebush Bay allows residents to enjoy the beauty of the outdoors and recreational activities just moments away from home.

Features:- Corner block (North-East aspect) with expanding water view and privacy on level 7, overlooking Parramatta River - The enormous lounge/dining area seamlessly connects to a generous balcony, extending the living space outdoors and offering a perfect spot for relaxation or socializing.- Full-length glazed windows bathes the apartment in natural light, fostering an airy atmosphere with water views, merging indoor and outdoor living spaces seamlessly.- Split system air conditioning in the living room- Secure building and lift access ensure convenience and security.- Allocated secure car space and storage cage.- Well equipped gym, security intercom and designer garden and water feature

Don't wait to call our friendly team now for more information.*Disclaimer: The description and property features in this advertisement may not accurately reflect the current features of the property including the building facilities