

707/1483-1489 Gold Coast Highway, Palm Beach, Qld 4221

Coastal

Unit For Sale

Wednesday, 15 May 2024

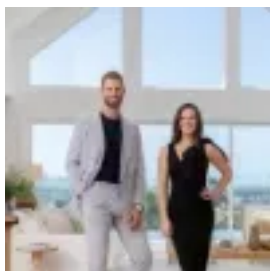
707/1483-1489 Gold Coast Highway, Palm Beach, Qld 4221

Bedrooms: 1

Bathrooms: 1

Parkings: 1

Type: Unit



Dan & Essie Moloney
0755266999

Offers over \$750,000

Cherish the coastal life with a carefree and comfortable 7th floor apartment in "Regency on the Beach". Directly across from the northern Palm Beach shoreline, enjoy uninterrupted coastline views that stretch all the way to Coolangatta. Tidy and well-maintained, it also features a functional kitchen with all essential appliances and an open-plan living and dining area that extends to a spacious balcony. Offering superb ocean vistas, it's the perfect place for alfresco relaxation or entertainment. Ocean views continue in the bedroom, with this sunny sanctuary fitted with a built-in robe, ensuite and balcony access. Additionally, the apartment includes practicalities like a European laundry and undercover parking and luxuries such as direct beach access and an onsite pool, spa, sauna, and rooftop entertainment area. Best of all, you have an aquatic paradise on your doorstep. SUP, swim, surf, fish, kayak, or launch your boat to cruise the waterways at Tallebudgera Beach and Creek, a mere 600m away. You can also walk to Tallebudgera SLSC for a relaxed meal or it's a short drive to sample the thriving Palm Beach Burleigh cuisine scene. Factor in Gold Coast Domestic and International Airport being under 9km away and this is the ideal weekender, permanent low-maintenance home or investment for convenience. Don't delay, inspect today!

Property Specifications:

- Easy-care 7th floor apartment boasting uninterrupted beach views down the coast to Coolangatta
- "Regency on the Beach" complex, directly across from the northern Palm Beach shoreline
- Tidy and well-presented
- Functional kitchen with oven, cooktop, dishwasher and storage
- Open plan living and dining area, flows onto the balcony
- Ocean-view bedroom with built-in robe and ensuite
- Generously sized, covered balcony overlooking the sand, surf and shoreline to Coolangatta
- European laundry
- Undercover parking for one car
- Direct beach access
- Pool, spa, sauna, beach-side BBQ amenities and rooftop entertaining area with 360-degree views
- Walk to Tallebudgera SLSC (210m), Tallebudgera Creek (500m), Tallebudgera off-leash dog beach (600m)
- 1.3km to Palm Beach State School, 3.8km to Palm Beach-Currumbin State High
- Short drive to the restaurants, bars, cafes and boutiques of Palm Beach and Burleigh
- Under 9km to Gold Coast Domestic and International Airport

Disclaimer: We have in preparing this information used our best endeavours to ensure that the information contained herein is true and accurate but accept no responsibility and disclaim all liability in respect of any errors, omissions, inaccuracies or misstatements that may occur. Prospective purchasers should make their own enquiries to verify the information contained herein.