

707/2C Wharf Road, Melrose Park, NSW 2114



Apartment For Sale

Tuesday, 12 March 2024

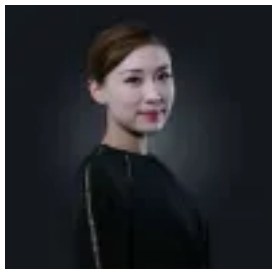
707/2C Wharf Road, Melrose Park, NSW 2114

Bedrooms: 2

Bathrooms: 2

Parkings: 1

Type: Apartment



joyce Tang
0430361985

\$790000-\$850000

Melrose Park is a major master plan with all the facilities and community, proudly developed and built by Payce & Sekisui House. Just 30 minutes drive from the city, 6 kilometres from the Parramatta CBD, Bus stop is right on your doorstep, free shuttle bus service to Meadowbank Train Station and Meadowbank Ferry Wharf. Key Features: • 2 Large bedrooms with built-in • Master bedroom has built-in robes with en-suite • generous open plan living area • Modern kitchen, stone bench with SMEG appliances including dishwasher, microwave, gas cooktop & range hood • Internal laundry with dryer • Split system reverse cycle air conditioning • Fully covered sunny winter garden • Secure building, two lifts to the car park • Access to a rooftop terrace with BBQ facilities and city view • Playground for kids & fitness area in a common area Water:- approx \$ 171.41 per quarter Council rates:- approx \$ 303.5 per quarter Strata Levies:- approx \$ 902.6 per quarter Please feel free to contact Joyce on 0430361985 or Agnes 0468901688 to for more information *Disclaimer: The above information has been gathered from sources that we believe are reliable. However, we cannot guarantee this information's accuracy nor accept responsibility for its accuracy. Any interested parties should rely on their own inquiries and judgment to determine the accuracy of this information for their own purposes. Images are for illustrative and design purposes only and do not represent the final product or finishes.