

707/32 Civic Way, Rouse Hill, NSW 2155



Apartment For Rent

Tuesday, 30 April 2024

707/32 Civic Way, Rouse Hill, NSW 2155

Bedrooms: 1

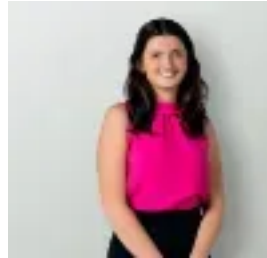
Bathrooms: 1

Parkings: 1

Type: Apartment



Vicky Kelly
0298997997



Maddie McKenzie
0298997997

\$580 pw

This impeccably presented executive apartment boasts abundant natural light and sophisticated style, featuring an open-plan layout situated in one of Rouse Hill's most convenient locales. The spacious master bedroom includes mirrored built-in wardrobes and provides direct access to the balcony via glass sliding doors. The airy and luminous open-plan living space is thoughtfully designed, offering ample space for dining and lounging areas that seamlessly extend onto the expansive balcony. The pristine kitchen is strategically positioned overlooking the living areas, equipped with Caesar stone countertops, stainless steel appliances including a gas cooktop and electric oven, a dishwasher, and ample cupboard space. The property also offers ducted air conditioning, gas appliances, European laundry, plenty of storage, street access plus secure carpark access to your car space, with visitors parking plus a secure foyer entry. The ultra-convenient and popular location is just minutes' walk to the Rouse Hill Town Centre and Northwest Metro at Rouse Hill Station as well as quality schools including Ironbark Ridge Primary and Rouse Hill High School.