

708/15 Bowes Street, Phillip, ACT 2606



Apartment For Sale

Thursday, 21 March 2024

708/15 Bowes Street, Phillip, ACT 2606

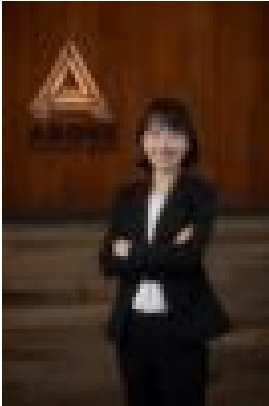
Bedrooms: 2

Bathrooms: 2

Parkings: 1

Area: 71 m2

Type: Apartment



Joy Cui



Matt Nicholls
0407328269

\$549,900+

Experience modern living at its finest in this inviting two-bedroom apartment nestled in the vibrant heart of Woden. Offering a harmonious blend of contemporary elegance and urban convenience, this residence sits on the 7th floor of the esteemed Grand Central Towers. Indulge in captivating views of the surrounding landscape from this meticulously designed interior. Step into spacious bedrooms, a light-filled open-plan living area, a sleek modern kitchen, and stylish bathrooms. Conveniently situated near the Westfield shopping center, Woden Interchange, and Canberra Hospital, this apartment offers easy access to shopping, dining, and healthcare amenities. With the bus interchange just downstairs, transportation around town is effortless. Whether you're a first-time buyer, or investor, this apartment provides the perfect combination of style, comfort, and practicality. Don't miss out on the opportunity to make this prime Woden address your home.

Key Features:- Stunning views of the Woden Valley and beyond.- Master bedroom with walk-in robe, ensuite, and balcony access.- Modern kitchen with stainless steel appliances and stone benchtops.- Roller blinds in bedrooms.- Open-plan layout.- Tiled entrance and carpeted living areas.- Spacious balcony.- Heating and cooling units.- Secure underground parking.- Close to Westfield Woden and the bus station.

FIGURES (Approximate)
EER: 6.0
Apartment Size: 71m²
Water Rates: \$187 per quarter
Rates: \$400 per quarter
Body Corporate Rates: \$1,236 per quarter
Land Tax: \$470 per quarter (only applicable if rented)