

# 708/25 Windsor Terrace, Williamstown, Vic 3016

## Apartment For Rent

Wednesday, 24 April 2024



708/25 Windsor Terrace, Williamstown, Vic 3016

**Bedrooms: 2**

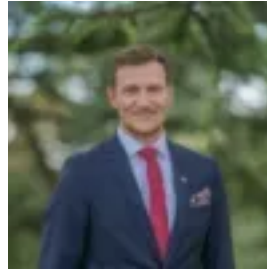
**Bathrooms: 2**

**Parkings: 1**

**Type: Apartment**



April Langley  
0421132535



Elliott Heslop  
0383870000

**\$750 per week**

Nestled in the GEM building apartment with balcony aspects bringing the outside in, this two-bedroom, two-bathroom apartment has plenty to offer. Inviting open-plan living/dining area with floor-to-ceiling sliding glass doors and under-cover balcony space. Well designed & detailed kitchen with timber cabinetry and white stone benchtops, along with butlers pantry with dedicated fridge space. Both carpeted bedrooms have built-in robes, and balcony views aspect, taking in the views of the bay. The master bedroom is complete with en-suite and the central bathroom with bath services the second bedroom. Building facilities include a gymnasium, along with a dedicated car space and storage cage. Directly opposite Port Gellibrand Coastal Heritage Park, and with Williamstown station and Nelson Place in the local area for convenience. Jellis Craig Inner West invites you to inspect this property. Please register to attend all advertised inspections. If you would like to inspect this property please click "Book inspection" or "Register" and you will receive a confirmation email to attend the inspection. By registering to inspect the property we will be able to keep you up to date with any time changes or cancellations. If no inspection time is available please click "Email Agent" or "Get in Touch" we will contact you when the next inspection time is available.