

71 Thompson Crescent, Research, Vic 3095



House For Sale

Thursday, 29 February 2024

71 Thompson Crescent, Research, Vic 3095

Bedrooms: 4

Bathrooms: 2

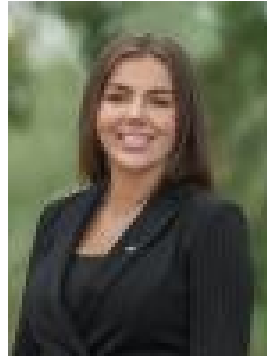
Parkings: 2

Area: 3082 m2

Type: House



Aaron Yeats
0400067024



Ashleigh Garch
0402660934

\$1,050,000 - \$1,150,000

A family treasure in a picturesque setting, this neat-as-a-pin home guarantees lifestyle success, whether you are looking for a treechange, space to have animals, or a solid investment opportunity with possible subdivision potential in the future/somewhere to build your dream home (STCA), you simply can't go wrong! Move-in ready, the oversized lounge room features polished timber floors, accompanied by a dining zone and a well-presented galley kitchen equipped with stainless-steel appliances. Accommodation is plentiful and includes four robed bedrooms, a home office and a versatile retreat/living room, serviced by two sparkling bathrooms. There's more than enough room outdoors for relaxation, with property features including ducted heating, split system air conditioning, a mudroom, under house storage, workshop/shed, and a semi-circular driveway leading to a double carport. Exceptionally located a short walk from Yarramie Reserve, zoned for Research Primary School and Eltham High, and a short distance from Eltham College, Research Central shops, the vibrant hub of Eltham Shopping Village and Train Station.