

711/128 Banks Avenue, Eastgardens, NSW, 2036

Sold Apartment

Thursday, 31 August 2023



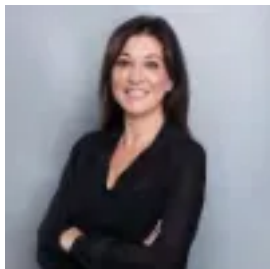
711/128 Banks Avenue, Eastgardens, NSW, 2036

Bedrooms: 3

Bathrooms: 2

Parkings: 2

Type: Apartment



Vanessa White

0292872777

Stunning light-filled apartment with enviable house-like feel

This oversized apartment enjoys an elevated position, both north and east-facing, capturing abundant natural light and lush green views. A contemporary design encompasses an expansive lounge/dining/kitchen area with timber feature tiles, flowing out to a fabulous entertainer's balcony, overlooking the neighbouring golf course. The bedrooms are fitted with built-ins and full-length windows, the master with private balcony, while a sizeable separate study with access to outdoor area is perfect for working from home.

Just 8km from Sydney's CBD, the apartment has access to excellent public transport options, not to mention close proximity to Westfield Eastgardens, beautiful beaches, golf courses and Sydney airport. And with Allium's premium facilities including pool, gym and outdoor cinema, everything required for a relaxed, yet vibrant lifestyle is right on your very doorstep.

Three-bedroom apartment of 143sqm with dual aspect, level 7 of security building
Generous living/kitchen area with plenty of natural light & timber feature tiles
Expansive balcony, facing both north and east, overlooking golf course
Chic gas kitchen with island bench, stone benchtops and superior appliances
Bedrooms have built-ins & full-length windows, master with ensuite & private balcony
Two fully-tiled bathrooms with elegant features; ensuite with bathtub
Bright spacious separate study with full-length window and access to main balcony
Two security car spaces, internal laundry, storage, air conditioning
Facilities include gym, sauna, spa, outdoor cinema, sky garden terrace, BBQ areas
Onsite building manager, childcare, retail outlets, cafes, supermarket & gardens
Pagewood Green offers 8000sqm park with basketball court & children's playground
Close to CBD, Sydney airport, SCG, Centennial Park, Westfield Eastgardens
A choice of buses available from Westfield Eastgardens interchange
Next door to the Lakes Golf Course, Bonnie Doon Golf Club & Mutch Park
Short drive to stunning beaches including Coogee, Maroubra and Clovelly

Outgoings:

Strata: \$1692 per quarter

Council: \$315 per quarter

Water: \$158 per quarter