

720 South Pine Road, Everton Park, Qld 4053



House For Sale

Friday, 3 November 2023

720 South Pine Road, Everton Park, Qld 4053

Bedrooms: 3

Bathrooms: 1

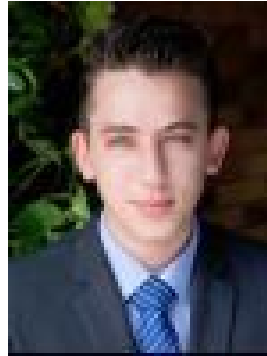
Parkings: 2

Area: 1358 m2

Type: House



Alistair Macmillan



Sam Hagen

0406630635

Make An Offer

Perched high on the hill while offering breathtaking elevated views to the city and beyond, is one of the oldest homes in the district. This original 'farmhouse' has a rich history that goes all the way back to the 1920's. First time being offered for sale in over 30 years, this is a very rare opportunity to secure an iconic home on such a large parcel of land. Features Include: Home is in fantastic condition & ready to be moved into today Original sought after features throughout Large front yard + large rear yard Massive potential to renovate further and utilize expansive yard space An amazing opportunity for a home-business that would benefit from its prominent position, the property includes a beautiful classic three-bedroom Queenslander in good condition, presenting plenty of potential with character elements such as soaring ceilings, VJ walls, timber floors and generous wraparound verandahs. With major arterials, public transport, hospitals, top schools and a growing café and bar scene on its doorstep, this well-serviced location has it all. Less than a kilometre to Everton Plaza, homemakers centre and a brand new Brisbane City Council Library being constructed & expected to open in 2024. This property is just a three-minute drive to Mitchelton train station and an easy stroll to Teralba Park with its new playgrounds, dog park, bike paths and community garden. A 10-minute walk down the road brings you to the growing hub of popular café, bar and food vendors including Charlie's Fruit Market, Veganyumm, Tetto rooftop bar and the newly opened The Brook Hotel. And with several excellent schools located in the area (Everton Park State School, Northside Christian College, Mt Maria College, Prince of Peace Lutheran College), and only a 10-minute drive to Bunya and Samford Conservation Parks, it's easy to see why this area is becoming more sought-after for its balance of amenity and lifestyle. The owners are motivated and open to all offers. Don't miss this golden opportunity to secure your parcel of this fantastic growth area.