

**73A Virgil Avenue, Yokine, WA 6060**



**Sold House**

Thursday, 11 January 2024

73A Virgil Avenue, Yokine, WA 6060

**Bedrooms: 3**

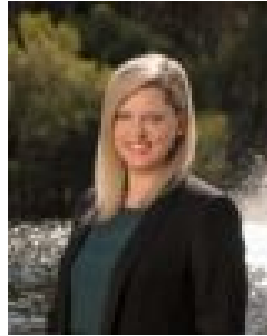
**Bathrooms: 2**

**Parkings: 2**

**Type: House**



Ralph Seymore  
0474111886



Carla Yazmadjian  
0415839588

**\$1,250,000**

73A Virgil Avenue is a spectacular family home with a focus on entertaining and luxurious living. Set in Yokine's revered 'Poet's Corner', in strolling distance to the Reserve itself, and within the Mt Lawley Senior High School and Yokine Primary School catchment areas, the location is equally impressive! This private and serene home, built in 2016, is a testament to beauty, style, and luxury. More than a house, this is a sanctuary that offers the perfect blend of modern comfort and tranquillity. The home features beautiful neutral tones and stunning hardwood Blackbutt flooring throughout, creating an ambiance of timeless elegance, while open plan living, dining, and kitchen areas have been designed for those who love to entertain. The kitchen itself is a true delight, offering everything a cooking enthusiast could dream of. Outside, the rear alfresco area includes an outdoor kitchen with built-in BBQ, perfect for peaceful evenings and outdoor dining. There's also an expansive front entertaining area to enjoy. Positioned on a 454sqm landholding, the home itself spans over 267 sqm meters, every part of which delights with impressive and extensive features, some of which include: Ground floor:- King sized master suite, including luxurious en-suite and massive walk-in robe- Open plan kitchen, living and dining- Huge walk-in pantry- Well-appointed laundry - Powder room- North facing rear alfresco- Wine cellar storage- Massive double remote garage- Storeroom First floor:- Two large bedrooms with walk-in robes- Central family bathroom- Theatre room- Powder room Other features include:- Plantation shutters - Air-conditioning- Rainwater tank- Intercom- Automatic gates at entrance PROPERTY PARTICULARS Shire Rates: \$2,185.39 pa Water Rates: \$1,537.25 pa City of Stirling