

**742/612 Lamington Avenue, Seacliff Park, SA 5049**



**Sold House**

Thursday, 7 March 2024

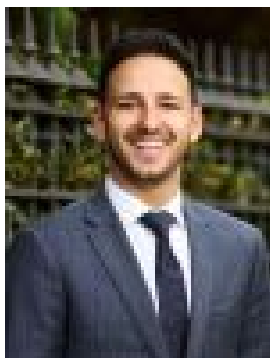
742/612 Lamington Avenue, Seacliff Park, SA 5049

**Bedrooms: 4**

**Bathrooms: 2**

**Parkings: 2**

**Type: House**



Stefan Siciliano

0403171489

## Contact agent

ALL THREE HOMES UNDER CONTRACT. Contact Agent or Enquire via email below for a builders information pack including the working drawings and finishes schedules. Welcome to Seacliff Park, where luxurious beachside living meets stunning contemporary design. We are proud to introduce three brand new homes in the popular suburb of Seacliff Park, located just 650 meters away from Seacliff Beach. These custom-built homes include double garages and four spacious bedrooms, including a master with a walk-in robe and bedrooms 2, 3, and 4 with built-in robes. There are 2 bathrooms complete with stone benchtops and full-height feature wall tiling, as well as a separate WC. The stunning open plan kitchen, dining, and living spaces feature modern, neutral, and high-quality finishes throughout. These brand new, turn-key, Torrens title homes are perfect for all buyers, including younger professionals, growing families, downsizers, and investors wanting a low-maintenance, 'lock up and leave' luxury lifestyle. Key Features: • Torrens titled and turn-key with all inclusions • Open plan kitchen, meals, and family area with a large island, double sink, dishwasher, and breakfast bar • Four spacious bedrooms all with built-in robes and reverse cycle air conditioning • Master bedroom with a walk-in robe and ensuite bathroom featuring double basins and stone benchtops • Main bathroom with a freestanding bathtub and a separate toilet • Colorbond verandah at the rear • Double garage with auto lift panel doors • Stone benchtops to the kitchen, bathroom, and ensuite • Ducted reverse cycle air conditioning throughout • Alarm system • Inclusive of all paving, fencing, landscaping, and irrigation • Contact agent or enquire via email below for a builder's information pack, including finishes schedules. Ideally located only a short walk away from Seacliff Railway Station and some of the best beaches in South Australia, including Seacliff and Brighton beaches, while still being close to great local schools and parks. Situated a short drive away from the Marion Shopping Precinct, you can be there within 5 minutes by car. Enjoy the benefits of other public transport options along Brighton Road for a convenient, easy and low maintenance lifestyle. Disclaimer: As much as we aimed to have all details represented within this advertisement be true and correct, it is the buyer/purchaser's responsibility to complete the correct due diligence while purchasing the property.