

# 74A Corinthian Road West, Shelley, WA 6148



## Sold House

Friday, 3 November 2023

74A Corinthian Road West, Shelley, WA 6148

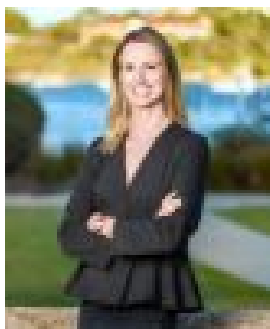
Bedrooms: 3

Bathrooms: 1

Parkings: 1

Area: 601 m<sup>2</sup>

Type: House



Amy Gohil



Vivek Gohil  
0451238101

**\$1,260,000**

• **PROPERTY UNDER OFFER - IF YOU ARE CONSIDERING SELLING PLEASE CALL ME** • Welcome to 74A Corinthian Road West in Shelley! A property offering an incredible opportunity for those seeking a new place to call home on this huge 601m<sup>2</sup> block. There are so many options with this fantastic three bedroom home that sits high in Shelley with potential views over the Canning River and beyond to the City. Live comfortably in this refurbished easy living home, buy as an investment property and continue to rent it out or knock it down and build your dream home. This spectacular location has some of the best views in Shelley with the potential for sweeping views of both the city and Canning River from a beautiful new two storey home, call your builder and start your design. The house boasts a spacious layout, perfect for families or those who love to entertain. With ample natural light streaming through the large windows, every room feels bright and airy. The property features a well-designed kitchen, complete with modern appliances, stone bench tops and plenty of storage space. Whether you're a seasoned chef or just enjoy cooking for loved ones, this kitchen will surely inspire your culinary creativity. The principle bedroom sits at the front of the home and is generously sized with a bay window to the garden and built-in-robe, a large second bedroom also with built-in-robe and a third single bedroom or study. There is a large modernised family bathroom in neutral white and an additional toilet in the separate powder room. The laundry has been modernised and leads out to a drying court at the side of the home. Outside, you'll discover a large alfresco with steps leading down to the garden, perfect for outdoor gatherings or simply enjoying a quiet afternoon. The backyard offers plenty of room for kids to play or for those with a green thumb to indulge in gardening. Located in the sought-after suburb of Shelley, this property is surrounded by an array of amenities. You'll find yourself just a short distance away from schools, parks, shopping centers, and public transportation options. The convenient location ensures you're never far from everything you need. Don't miss out on the opportunity to make this house your dream home. Offers are invited, so act fast to secure this amazing property! Features Include:- 601m<sup>2</sup> block- Survey Strata - 3 Bedrooms- 1 Bathroom- Powder Room- Laundry with drying court access- Stone bench tops - Ducted Air-Conditioning- Additional WC off Laundry- Gas HWS- Reticulated Lawn & Garden- Lock up Garage - Potential for City & River Views - Dual Rossmoyne and Shelley Primary School Zones- Rossmoyne Senior High School Zone