

75 Moreing Street, Redcliffe, WA 6104

House For Sale

Thursday, 21 March 2024



75 Moreing Street, Redcliffe, WA 6104

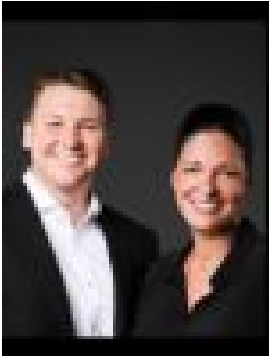
Bedrooms: 4

Bathrooms: 2

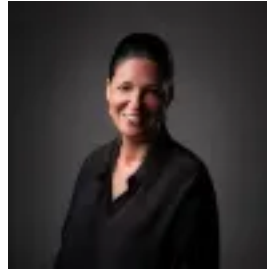
Parkings: 6

Area: 739 m2

Type: House



Jac Fear Karen Firth Team
0861687471



Karen Firth Jac Fear Team
0861687471

CLOSING DATE SALE

****OFFERS CLOSING 18/04/2024 AWST 5.00PM - SUIT BUYERS ABOVE \$699,000**** Welcome to your ideal family oasis, designed with both comfort and entertainment in mind. This family residence offers an inviting blend of charm and modern style, ideal for those who revel in entertaining or seek a tranquil sanctuary. The front living area is spacious and leads you to a newly renovated, open-plan kitchen and dining space. The kitchen features modern amenities including a double sink, oven, cooktop, extensive cabinetry, and a breakfast bar. Continuing through you will find a versatile second living space that has been designed to suit multiple needs. Whether it's entertainment or relaxation this space is perfect for hosting movie nights, facilitating sleepovers or even a generous play room for the kids. This adaptable space seamlessly connects to a generous wrap around alfresco area, equipped for entertainment and family fun. The inclusion of a pool and an extra storage shed truly underscores the property's commitment to a blend of leisure and practicality. The main bedroom is generously sized and is adjacent to the modern main bathroom with a spacious vanity, walk in shower and separate WC. Three additional bedrooms, one with a built-in robe, cater to family and guests alike, alongside a second bathroom that also functions as a laundry, complete with a walk-in shower, separate WC and vanity with storage. Located by Smyth Lake Reserve, this area is perfect for active lifestyles, offering easy access to Centenary and Selby Park within five minutes. Key amenities are close by, with Perth Airport, Costco, Belmont Forum, DFO Perth, and the new Woolworths all less than a five-minute drive away. The Swan River is also nearby, enhancing the serene living environment. For working professionals, the Redcliffe train station is in walkable distance and Perth CBD is just a 17 minute drive. Top schools such as; Redcliffe Primary, Cloverdale Primary, St Norbert College, Belmont City College, St Maria Goretti School and Kent Street High School are in the vicinity, making it an ideal spot for convenience, education, and leisure. Additional Features:- Pool - Additional Storage- Uncover parking for multiple vehicles - Private gated access to Smyth Lake Reserve For more information on this property, please contact the Jac Fear | Karen Firth today. We look forward to welcoming you. Council Rates | \$1,832.91 pa Water Rates | \$1,274.47 pa Land Area | 739 m2