

77 Milford Drive, Rouse Hill, NSW 2155



Sold House

Thursday, 16 November 2023

77 Milford Drive, Rouse Hill, NSW 2155

Bedrooms: 4

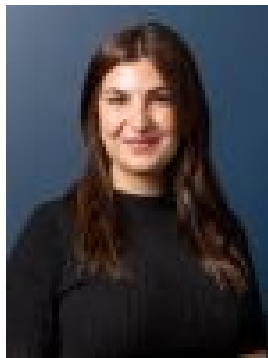
Bathrooms: 2

Parkings: 3

Type: House



Shad McMillan
0414887488



Loren Khamu
0404864808

\$2,020,000

This large and stunning single level family home that has been beautifully renovated and smartly remodelled and the 700sqm block has allowed for a triple garage with side access plus an inground pool with plenty of yard leftover. Entering the home via the large double doors into the formal foyer entry you'll instantly get a true sense of quality and luxury. Move through to the spacious and elegant formal lounge and dining area and then to the expensive and open plan family and meals area across the rear. Commanding this space is one of the best kitchens you will see in a single level. The 40mm Caesarstone is gleaming, the storage is abundant, including both sides of the large island breakfast bar and the appliances are quality, including a 900mm ILVE oven and a gas cooktop. Well positioned throughout the home are 4 generous bedrooms plus a good-sized study or 5th bedroom option. All bedrooms come with built ins and ceiling fans and are serviced by a lavish family bathroom with floor to ceiling tiles, double vanities, a freestanding bath and a separate toilet/powder room. The large master comes with its very own walk in robe and stylish ensuite. This comprehensive home also features brand new Actron ducted air-conditioning, all gas appliances and alarm system, downlights and ceiling fans throughout as well as plantation shutters and bamboo flooring to all living areas and plush carpets to the bedrooms. You also have the rare remote Triple garage with internal access and side access as mentioned. The backyard is the perfect family haven. The sparkling salt water and solar heated in ground pool is surrounded by travertine and glass fencing. You have the large and high set pitched roof pergola and multiple sitting areas including the perfect fire pit space, plus there is also plenty of grass leftover for the kids and family pets. In fact, the 700sqm is beautifully landscaped from front to back. This Highlands Ridge location is picturesque but also convenient. You have regular bus services literally at your door and easy access to fantastic family parks and sporting fields, as well as quality schooling at Rouse Hill Primary and High Schools plus Our Lady of the Angels and your pick of shopping outlets at Rouse Hill Shopping Village and the Rouse Hill Town Centre with the North West Metro along side.