

**78/1-3 Bigge Street, Warwick Farm, NSW 2170**

**CENTURY 21**

**Apartment For Sale**

Thursday, 2 November 2023

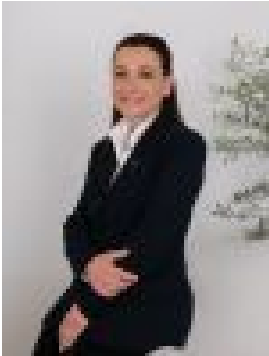
78/1-3 Bigge Street, Warwick Farm, NSW 2170

**Bedrooms: 2**

**Bathrooms: 2**

**Parkings: 1**

**Type: Apartment**



Sonia Poulos  
0296015944

**\$450,000**

Enjoying a lifestyle of ultra-convenience, this widely appealing apartment is ready for your enjoyment, showcasing the finest finishes with a spacious open plan living area. Situated in a Sleek and Modern complex, bordering Liverpool making it convenient to all amenities & lifestyle options.\* 2 large bedrooms with built ins \* Spacious ensuite to main \* Sun-drenched open plan living area with air conditioning\* Large tiled balcony with lovely outlook\* Stylish kitchen with gas cooking & quality appliances\* Complete Modern bathroom \* Internal laundry\* Situated on level 10 in a security block\* 1 registered parking space\* Living area + Balcony 90qm, Car space 15sqmDISCLAIMER: While Century21 Combined Liverpool has made every effort in preparing this information and used their best endeavours to ensure that the information contained is true and accurate, we accept no responsibility and disclaim all liability in respect of any errors, inaccuracies or misstatements contained herein. Century21 Combined Liverpool encourages and advises all prospective purchasers to make their own inquiries in order to verify the information contained herein.