

**78 Jackson Drive, Drouin, Vic 3818**



**House For Sale**

Wednesday, 7 February 2024

78 Jackson Drive, Drouin, Vic 3818

**Bedrooms: 4**

**Bathrooms: 2**

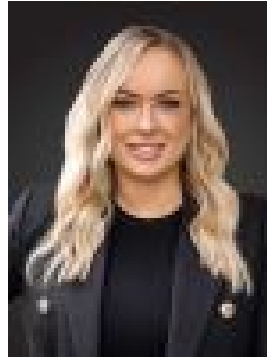
**Parkings: 2**

**Area: 867 m2**

**Type: House**



Tahnee Morgan  
0410029953



Terri Fellows  
0400573483

**\$700,000 - \$770,000**

Discover your residence in Drouin, a welcoming family-oriented town nestled in the scenic Gippsland Hills. This expansive four-bedroom, two-bathroom + powder room home, situated on an ample 867m<sup>2</sup> allotment, is an ideal haven for a growing family to enjoy. Double doors open to the master bedroom offering an ensuite with 20mm stone bench double vanity, a semi-frameless tile base shower with double shower heads, toilet, and a large walk-in wardrobe, whilst the remaining three bedrooms feature built-in wardrobes conveniently located close by the main bathroom, bath, shower, 20mm stone vanity, separate toilet, and generous sized laundry with ample cupboards. This residence boasts a functional and friendly floorplan with three living areas, which include a theatre room, rumpus room and open plan living, a separate powder room and ample storage throughout. The chef of the household is bound to be impressed with the u-shaped kitchen, extensive bench space, spacious butler's pantry, 900mm oven and stove top, twin sink, dishwasher, and glass splashback, which overlooks the living and meals zone. Adjoining this space through stacker doors sits the freshly stained outdoor decked entertaining area with views, leading out to an expansive backyard with rear roller access from the garage. The fully enclosed garden and lawn create an ideal space for children and pets to play. Additional features include ducted heating, x2 split system cooling units, a double garage with internal access, a roofed alfresco with decking, Opticom services and extensive storage options. All amenities are set close, like Drouin Primary and Secondary schools, childcare, restaurants, doctors, café's, Woolworths, Parks, walking tracks, full access to the residents Country Club, which includes a 25-metre heated pool, gymnasium, function room and kitchen with just a short stroll to the parkland and Drouin town centre. Set against the backdrop of the serene Jacksons View Estate, characterized by lush greenery and picturesque surroundings. Schedule a viewing today to experience the modern comfort that awaits your family at Jacksons View Estate. We anticipate welcoming you at our next open home. Property Code: 482