

79 Springdale Road, Killara, NSW 2071

STONE

House For Sale

Friday, 2 February 2024

79 Springdale Road, Killara, NSW 2071

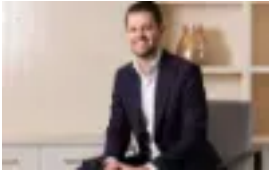
Bedrooms: 5

Bathrooms: 3

Parkings: 2

Area: 1113 m2

Type: House



Matt Payne
0290953500



Steven Kourdis
0402555675

Auction: Saturday 2nd March Onsite

Graced by one of Killara's premier east side locations, on stunning Killara Park, this light and spacious family home invites easy multi-generational living throughout beautifully refurbished interiors. The impressive 1113sqm approx. land hosts boundless non conservation potential central to rail and Killara High School. Vast interiors boast a range of adaptable formal and casual living and dining areas that effortlessly engage with the paved entertaining patios, pool, and level lawns to create a showcase for restful enjoyment and easy hospitality. Downstairs, a semi self-contained studio is ideal for extended family or a home business.

- 1113sqm approx. non conservation block in a prestigious blue-chip location
- Character elegance upgraded and refurbished for superior modern comfort
- Private garden, deep sun-soaked front verandah the enjoying north aspect
- Double entry, refinished timber floors, plush carpet, fresh paint throughout
- High ceilings and large windows for abundant light, plentiful storage
- Living and dining rooms showcase beautiful original charm, feature fireplace
- Family room, casual living and dining flow to outdoor entertaining areas
- Open kitchen, gas cooktop, oven + grill, Miele dishwasher, breakfast bar
- Downstairs studio living, bedroom with ensuite, self-contained potential
- Five large bedrooms, main: walk-in robe + ensuite with heated floor and rail
- Three modern bathrooms, powder room, a spa-bath the kids will love
- Family-sized swimming pool in private rear garden with level lawn for play
- Wine cellar, storage, workshop, reverse cycle air con, fans, gas points
- Double lock up garage with auto door, internal access, side driveway
- Killara Park and Bert Oldfield Oval, KU Preschool across the road
- Easy access to rail and buses, Lindfield village, short drive to Chatswood