

**8/12 Albermarle Place, Phillip, ACT 2606**



**Apartment For Rent**

Tuesday, 4 June 2024

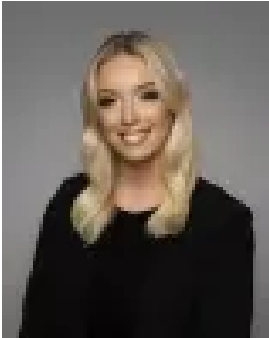
8/12 Albermarle Place, Phillip, ACT 2606

**Bedrooms: 1**

**Bathrooms: 1**

**Parkings: 1**

**Type: Apartment**



Taylor Sandford  
0262952433

## \$440 Per Week

This one bedroom, upper floor apartment is located in the Central Park complex. The unit boasts large open living areas, a spacious kitchen, combined bathroom/laundry with dryer and spa. Features of this apartment include:-  
- Impeccably maintained 'Byron Court' area within the Central Park Complex  
- Covered car space includes a convenient storage shed  
- Proximity to local amenities and public transportation  
- Enjoy year-round comfort with a reverse cycle air conditioner  
- Bedroom featuring built-in robes for ample storage  
- Well-appointed kitchen with generous bench space  
\*\*\*This apartment is located in the 'Byron Court' area of the Central Park Complex\*\*\*  
Situated within walking distance to the Canberra Hospital, Woden shopping centre, restaurants, cafes, and bus stops, this apartment offers unparalleled lifestyle and convenience at your fingertips. Available 31st of July 2024  
Tenants must seek Landlord's consent for a pet  
Energy efficiency rating is unknown  
The property does comply with the minimum ceiling insulation standard.  
WISH TO INSPECT?  
1. Click on the "BOOK INSPECTION" button  
2. Register to join an existing inspection  
3. If no time offered, please register so we can contact you once a time is arranged  
4. If you do not register, we cannot notify you of any time changes, cancellations or further inspection times  
\*Please note all care has been taken in providing the marketing information, Blackshaw Manuka will not be held liable for any errors in typing or information and you should rely on your own investigation for accuracy.  
less