

8/13-15 Pacific Drive, Horseshoe Bay, Qld 4819



Unit For Sale

Tuesday, 9 April 2024

8/13-15 Pacific Drive, Horseshoe Bay, Qld 4819

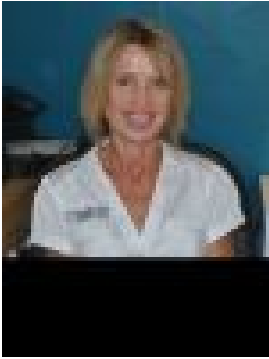
Bedrooms: 2

Bathrooms: 1

Parkings: 1

Area: 89 m2

Type: Unit



Cindy Shafer

\$475,000

This wonderful townhouse style unit is located in a popular beach front holiday complex on the north facing bay of Magnetic Island, enjoying the stunning sunsets, calm waters, watersports activity, Sunday markets, entertainment, shops and restaurants. Presented fully furnished and equipped. The kitchen, dining and loungeroom with balcony is located on the upper level with laundry and powder room. The bedrooms are on the lower level, with new split cycle air conditioners installed in February 2024. The large main bathroom has corner bath and shower, vanity and toilet. An in-ground pool and Barbeque /Entertaining area is within the complex. A covered single carport is included. Priced to sell in this growing and sort-after market, this opportunity presents excellent options for investors, retirees or your own island getaway in tropical paradise