

**8/143-149 Coleman Parade, Glen Waverley, Vic 3150**



**Sold Townhouse**

Friday, 11 August 2023

8/143-149 Coleman Parade, Glen Waverley, Vic 3150

**Bedrooms: 3**

**Bathrooms: 2**

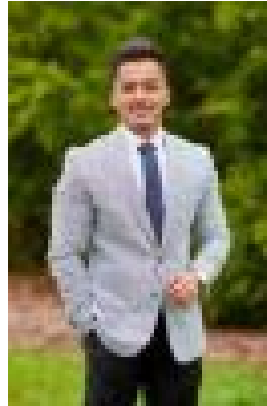
**Parkings: 2**

**Area: 170 m2**

**Type: Townhouse**



Nalaka Weerakoon  
0388041432



Kush Chetri  
0425199192

**\$913,000**

AUCTION ON 9TH OF SEPTEMBER @11:30AM Brilliantly located in Glen Waverley Secondary School Zone this immaculate townhome is sure to impress! Embodying the comforts of modern lifestyle design with a wonderful interaction between inside and out, this gorgeous residence captures the appeal of space whilst relishing a carefree ambience for effortless enjoyment. Inside, the sleek attributes of engineered timber floorboards entice you through to the living room where you can relax in comfort before stepping through to the dining area that's bathed in northerly sunshine. Adjoining this space is a quality kitchen featuring stone benchtops, stainless steel appliances, dishwasher, a breakfast bench while sliding doors create a streamlined connection out onto the veranda and sun-filled courtyard. A bedroom, the powder room and a large laundry grace the ground floor, with the upper level with a balcony is a haven for restful evenings. Here you'll find two more robed bedrooms, including the master bedroom with built-in-robe and ensuite. The gorgeous family bathroom consists of stone bench vanity, bath, shower and toilet. Ducted heating and split system A/C will give you year-round comfort. Under stair storage plus a single garage with space for the second car. Leave your cars at home, 3 minutes' walk will take you to Glen Waverley station. Enviably situated in the GWSC Zone, only a short walk from Wesley College, Glen Waverley Primary, The Glen with its recent renovations, the culinary delights of Kingsway, whilst within close proximity to both Monash and EastLink Freeways.