

# 8/16 Djerral Ave, Burleigh Heads, Qld 4220



## Unit For Sale

Friday, 10 May 2024

8/16 Djerral Ave, Burleigh Heads, Qld 4220

**Bedrooms: 2**

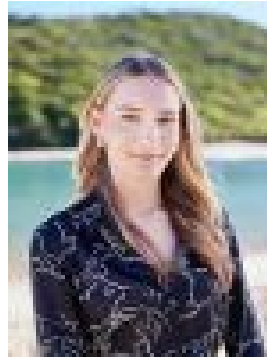
**Bathrooms: 2**

**Parkings: 2**

**Type: Unit**



Will West  
0755766616



Sol Brown  
0490774636

## Expressions of Interest

Rarely available in this highly sought after Koala Park location is this fully renovated 2-bedroom unit situated in the popular 'Koala Cove' building. This property offers you a superb coastal lifestyle in a peaceful setting, just a short stroll of Tallebudgera Creek and beautiful white sandy beaches. The sleek kitchen flows through to an open plan living/dining area and features stone bench tops, plenty of cupboard space and a breakfast bar, allowing you to maintain contact with friends and family in the living and dining areas. The perfect combination of natural light, cool breezes and privacy, this one will tick all the boxes. The airconditioned living/dining area features built-in cabinetry and leads you out to the outdoor balcony overlooking the pool area and the surrounding Burleigh Head National Park. Rarely will you find an apartment with 2 car spaces this close to a beautiful Talle Creek and the beach, this really is location, location. - Sought after location in Koala Park, walk to Tallebudgera creek & beaches - 2 bedrooms, 2 bathrooms & 2 car spaces - Air-conditioned open plan living & dining area adjoining kitchen - Sleek kitchen with breakfast bar, plenty of cupboard space & stone bench tops - Entertaining balcony overlooking the pool area & Burleigh Head National Park - 2 bedrooms both with air con, fans & built-ins the main with ensuite - Main bathroom/ laundry combined - Durable timber look flooring, plantation shutters, ceiling fans & air con throughout - Onsite inground saltwater swimming pool & BBQ area - 2 secure car spaces in an underground car park - Playground just 50 metres away, hair salon & cafe situated right next door - Club Talle - Tallebudgera Surf club just minutes away - Perfect for the owner occupier or investor - Great walks through Burleigh Points National Park - Walking distance to Burleigh Beach, James Street & Palm Beach. The popular Koala Park enclave is also located within a moments to Burleigh Heads National Park, and the award-winning restaurants & nightlife of Burleigh Heads. The area has become a highly sought-after mecca for its designer homes and the amazing access to some of the best facilities that the Gold Coast has to offer. Properties in this sought after location don't come to the market very often, don't miss this opportunity!