

8/20 Plumer Road, Rose Bay, NSW 2029

PPD REALESTATE

Sold Apartment

Friday, 3 November 2023

8/20 Plumer Road, Rose Bay, NSW 2029

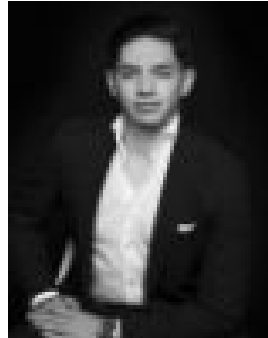
Bedrooms: 2

Bathrooms: 1

Type: Apartment



Sean Poche
0433011576



Nate Chacon
0412972705

Contact agent

Boutique style meets cosmopolitan harbourside living in this Art Deco retreat in the heart of Plumer Road's European-style shopping hub with authentic French cafes and patisseries at the doorstep giving it a unique village atmosphere. Set to the quiet rear of the tightly held Bellevue Grand, a boutique Art Deco block of 12, the oversized two-bedroom apartment is dressed in soothing neutral tones with lush leafy outlook as a tranquil backdrop. A bright east aspect, European double-glazed casement windows and high ornate ceilings make for comfortable living in a blue-ribbon setting a level 350m to Rose Bay's celebrated harbour attractions. A mid-floor setting with only one common wall makes for easy living while its location offers a lifestyle of easy convenience. Stroll along the scenic foreshore to celebrated waterfront restaurants, recreational harbour parkland and boutique harbour beaches or jump on the ferry for a relaxed commute to the city. -?Classically elegant secure block of 12-?Quiet rear position on the first floor-?Great layout with 2 double bedrooms -?Huge main bed with a wall of built-ins -?2nd with a custom daybed and study -?High ornate ceilings, leafy outlooks -?Oversized living space, sunlit dining -?Modern Bosch-appointed gas kitchen -?Breakfast bar, double-glazed windows-?Fresh bathroom, frameless glass shower-?Integrated laundry facilities, mood lighting-?Rare opportunity in the heart of the village-?Stroll down to the picturesque foreshore-?800m to Rose Bay Wharf and Catalina-?Prime investment, high rental demand