

8/45 Conn Street, Ferntree Gully, Vic 3156



Sold Townhouse

Monday, 14 August 2023

8/45 Conn Street, Ferntree Gully, Vic 3156

Bedrooms: 2

Bathrooms: 1

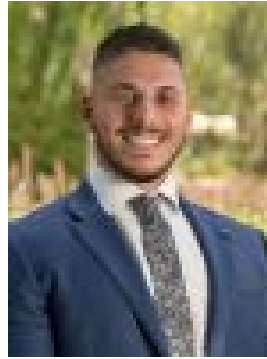
Parkings: 1

Area: 95 m2

Type: Townhouse



Ben Thomas
0422273826



Tim Milaki
0413336177

\$580,000

THE PROPERTY Positioned prominently walking distance to Mountain Gate shops, cafés, restaurants, discover a designer townhouse offering an impeccable union of modern, contemporary flair matched by spacious interiors. Low maintenance and light-filled, the open plan, lower-level living and dining domain flawlessly incorporates a sleek stone kitchen boasting premium appliances, ample storage, and effortlessly connects the courtyard with in through double stacker glass sliding doors. Retire upstairs to the sleeping quarters to one of two spacious bedrooms with built-in robe storage all serviced by a sparkling central bathroom. A large study area within soaring ceilings makes it the ideal place to work from home.

Rounding off the home list of inclusions, a lower-level powder room, European laundry, and a secure single remote garage with internal access.
THE FEATURES • Stylish and near-new 2-bedroom, 1-bathroom townhouse • Low maintenance living surrounded with lifestyle allure • Light-filled open plan living and dining • Contemporary kitchen with stone benches, quality appliances and ample bench space • Two spacious bedrooms upstairs, with built-in robe storage • Upstairs balcony for entertaining • Spacious study upstairs • Secure, single car accommodation with internal access
THE LOCATION A lifestyle of convenience awaits, located an easy stroll to Mountain Gates shops and conveniences, HV Jones Reserve, Pickett Reserve, Wattleview Primary, and Mountain Gate Primary all within walking distance.