

**8/8 Saint Kilda Court, Durack, Qld 4077**



**Townhouse For Sale**

Tuesday, 28 May 2024

8/8 Saint Kilda Court, Durack, Qld 4077

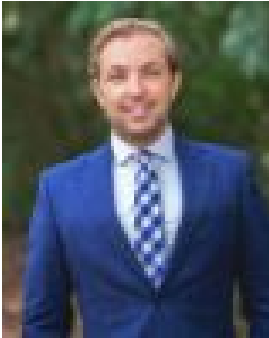
**Bedrooms: 3**

**Bathrooms: 2**

**Parkings: 1**

**Area: 134 m2**

**Type: Townhouse**



Lachlan Humble  
0438688347

## FOR SALE

Situated in a sought-after complex in a top position, this three-bedroom townhouse presents superb living for buyers seeking a home or investment close to amenities. Designed over two levels, the ground floor unveils an open living area, which forms a relaxing hideaway adorned with tiled floors, air-conditioning, and a study nook. The stylish kitchen is well-appointed for easy cooking, featuring large stone benchtops, lots of cabinetry, and stainless steel appliances. Unwind, host BBQs and enjoy afternoon drinks on the undercover patio, which rests by the leafy gardens where you can plant flowers, herbs and veggies. Three bedrooms with built-in robes occupy the upper floor. The master bedroom boasts a stylish ensuite, a second modern bathroom services the rest of the level, and a third toilet and laundry are downstairs. Offering privacy and peace of mind, the property also features a single lock-up garage, excellent storage, and security screens. Property highlights:- Private townhouse peacefully positioned in St Kilda Court- Open living and dining area featuring a study nook- Stonetop kitchen with large benchtops and stainless steel appliances- Undercover patio and private gardens with room to plant herbs/veggies- 3 bedrooms with built-in robes, 2.5 bathrooms, laundry- The master bedroom includes an ensuite- Single-car lock-up garage, under-stair storage area- Security screens, ceiling fans, air-conditioned living area- Sought-after complex with ample visitor parking

Residing in a tremendous pocket of Durack, this townhouse enjoys a peaceful position within easy walking distance of parks, playgrounds, bike paths and scenic trails through the wetlands. Children are only 1.3km from Durack State School, and buyers are close to bus stops and the Ipswich Motorway. Just 2km from Inala Plaza and 2.2km to Blunder Road Shopping Village, you will love the easy access to shopping, dining and medical centres. **DISCLAIMER:** Whilst all care has been taken to ensure that the information provided herein is correct, we do not take responsibility for any inaccuracies. Accordingly, we recommend that all interested parties should make their own enquiries and due diligence to verify the information. Any personal information provided to Cameron Crouch Property T/As Ray White Sherwood, will come under the terms set out in our Privacy Policy, which can be found here for your convenience: <https://www.raywhite.com/privacy>.