

8 Backman Street, Marsden Park, NSW 2765

House For Sale

Wednesday, 3 April 2024

8 Backman Street, Marsden Park, NSW 2765

Bedrooms: 4

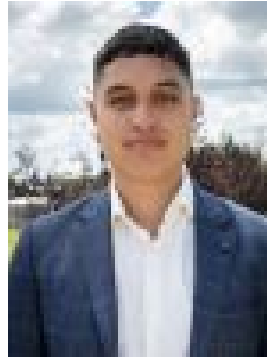
Bathrooms: 2

Parkings: 1

Type: House



Theesan Pather
0283157794



Pera Tutua-Nathan
0283157794

For Sale | Contact Agent

Theesan Pather on behalf of Urban Real Estate Marsden Park is proud to present a sublime single storey 4 bedroom home to market in the most in demand pocket of the estate just a short walk to Elara shopping village, Northbourne Primary School & Elara's main central park and playground !An opportunity exists for someone to take ownership of this beautifully maintained and immaculately presented property & enjoy all the luxuries and convenience the owners have been privy to since its construction.Originally completed in 2020 the house was built by the esteemed builders at New living (Masterton) and with a 300m East facing block just a few hundred meters away from all the estate's key amenities there is no wonder why they chose it to build their dream first home. Stepping in the property features high ceilings, Downlights throughout, Plantation Shutters – 4 Good Sized rooms plus 2 distinct living areas perfect for a young family with kids.Vendors have invested a lot into expanding the outdoor tiled alfresco with paving to the fence whilst retaining a nice portion of grassed area for those families that have kids or pets.Number 8 Backman is a perfect example of an ideal entry level property in Marsden Park, Ideal for new owners of almost any kind – Investors will love the location, Downsizers will love the low maintenance, We expect upsizer's from apartments will appreciate the space and of course First home buyer will probably like the price !We look forward to meeting with you for inspections, For more info and to organise a private viewing contact Theesan on 0422 580 577.Property Features:- High Ceilings- Full Ducted AC- 40mm Ceaser Stone Island Bench- 900mm Gas Cooktop & Range- Extra Wide Fridge Space (plumbed)- Master + W.I.R & Ensuite- Downlights throughout- Dual Living Area- Paved Backyard with custom bench- Built-in Robes all RoomsLocation Features:- Walking Distance St Lukes K-12- Walking Distance Elara Village Shopping Centre- Walking Distance Northbourne PrimaryDisclaimer:All information contained herein is gathered from sources we deem to be reliable. However, we cannot guarantee its accuracy, and interested persons should rely on their own enquiries. Images & Furnishing are for illustrative purposes only and do not represent the final product or finishes. For inclusions refer to the inclusions in the contract of sale. Areas are approximate.All parties are advised to seek full independent legal and professional advice and investigations prior to any action or decision.