

8 Dominic Place, Heathwood, Qld 4110

House For Sale

Tuesday, 7 May 2024



8 Dominic Place, Heathwood, Qld 4110

Bedrooms: 4

Bathrooms: 2

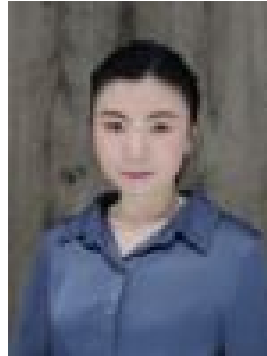
Parkings: 2

Area: 402 m2

Type: House



Lin Du
0756325841



Coral Ouyang
0412556260

Contact Agent

Home Features:- 4 Spacious bedrooms- Master ensuite with Walk in Robe, ceiling fan AND aircon!- Seperate lounge and dining- Third living area for study or entertainment!- Double lock up garage- Ceiling fans throughout all rooms and airconditioning in lounge- Spacious lawn/backyard- Quality appliances and large kitchen station- Walk in Pantry- Seperate and spacious Laundry- Powder room- Plenty of space for family and friends to enjoy!- Beautiful natural sunlight throughout and cool breeze!Suburb Profile:Heathwood Paradise is an upcoming estate located on exclusive hilltop land in the heart of Brisbane's southern suburbs. Close to all the essentials and the luxury of living next to parkland, Stage one is under construction and there are only 7 lots left.At Heathwood Paradise, convenience is at your fingertips and you'll be just a stroll from shopping at Parkwood Village and only a few minutes from Forest Lake Shopping Centre. You'll live minutes from your choice of schools such as St John's Anglican College, Brisbane Boy's College and University of Queensland and be spoilt for choice for golf and recreational facilities. The Oxley golf club is round the corner and there are lakeside parklands with kilometres of walkways and cycle paths, playing fields, lush native bushland with bubbling creeks and grassed picnic reserves, perfect for a great day with the family.You'll be a short drive from the Citylink rail stations of Richlands or Oxley and you'll access all parts of Brisbane and the Gold Coast via the nearby Logan and Ipswich Motorways. The Brisbane CBD is only a 30-minute drive too. You'll also be close to the diverse shopping, dining and entertainment on offer at Indooroopilly, Toowong and Sunnybank Shopping Centres.Surrounded by quality homes in the vibrant new area of Heathwood, Heathwood Paradise is sure to become a sought-after address of enduring quality and style.Disclaimer: We have in preparing this information used our best endeavours to ensure that the information contained herein is true and accurate but accept no responsibility and disclaim all liability in respect of any errors, omissions, inaccuracies or misstatements that may occur. Prospective purchasers should make their own enquiries to verify the information contained herein.