

8 Elsa Glade, Schofields, NSW 2762

Sold House

Thursday, 13 June 2024



8 Elsa Glade, Schofields, NSW 2762

Bedrooms: 4

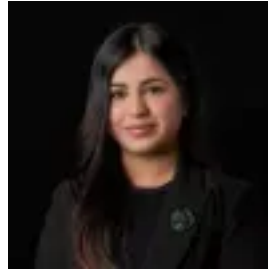
Bathrooms: 2

Parkings: 2

Type: House



Amit Kumar
0288964336



Siya Sachdeva
0288964336

\$1,203,500

Located in the highly sought-after area of Schofields, this meticulously planned double-storey home is nestled in a vibrant community brimming with essential amenities, schools, parks, and more. This exceptional property is designed to provide a perfect balance of space, comfort, and style, ensuring every family member's needs are met with elegance and functionality. Upon entering, you are welcomed into a versatile and expansive open-plan layout, where natural light pours into every corner, creating a warm and inviting atmosphere. The kitchen, dining, and living areas seamlessly flow together, accentuated by large glass sliding doors that open to a covered alfresco area and a spacious backyard, ideal for outdoor entertaining. Additionally, the home features an additional living space near the entrance, perfect for more formal gatherings or a quiet retreat. The kitchen stands out as a centrepiece of modern design and practicality, equipped with top-of-the-line stainless steel appliances, sleek benchtops, a four-burner gas cooktop, a 600mm oven, and elegant tiled splashbacks. The inclusion of an eat-in breakfast bar and abundant storage ensures that cooking and dining are both enjoyable and efficient. Upstairs, the accommodation is thoughtfully laid out with four generously sized bedrooms. Each bedroom is designed to provide maximum comfort, with three featuring built-in robes. The master bedroom offers a luxurious escape, boasting a spacious walk-in wardrobe, a private ensuite bathroom, and access to a private balcony, perfect for relaxation. This home is meticulously crafted to meet the demands of modern family living, offering a luxurious yet practical environment in one of Schofields' most desirable locations. Features you will love:- Potential 5th Bedroom downstairs - LED lights throughout the home as well as pendant lights in the dining area and stairs - Ducted air conditioning with multiple zones as well as a separate ducted air-conditioner for the master bedroom - Formal living area upon entry - Balcony to master bedroom- Vinyl plank flooring downstairs- Undercover alfresco with ceiling fan and backyard- Double lock up garage with internal access and remote-controlled- Builder: Rawson Homes Location Highlights:- 4-minute drive to Tallawong Metro Station- 5-minute drive to Schofields Train Station and Schofields Village- 12-minute walk to Schofields Public School- 9-minute drive to Rouse Hill Town Centre- A short distance to daycare centres- A short distance to the local parks and more Disclaimer: All information contained herein is obtained from property owners or third-party sources which we believe are reliable. We have no reason to doubt its accuracy; however, we cannot guarantee it. All interested persons should rely on their inquiries.