

8 Erica Crescent, Heathmont, Vic 3135

Sold House

Friday, 23 February 2024

8 Erica Crescent, Heathmont, Vic 3135

Bedrooms: 4

Bathrooms: 2

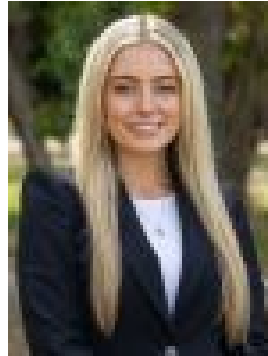
Parkings: 2

Area: 678 m2

Type: House



Marcus Lim
0433044038



Ella Rait
0424669181

\$1,405,000

Demonstrating a crisp contemporary vibe throughout, this stunning family home will impress those who visit with its sophisticated dimensions, enticing entertaining deck and rear bungalow that provides excellent flexibility. Sleekly finished with superior style, the home's streamlined interior flows inside where a spacious entry foyer is beautifully detailed with hardwood floors and connects with the open plan kitchen, living and dining domain showcasing stone benchtops, glass and stainless-steel splashbacks, 900mm Technika appliances, LG dishwasher, corner pantry plus a brilliant breakfast bench, while an adjoining rumpus provides a wonderful space for family relaxation or entertaining. Sliding doors carry the space outside, opening onto a gorgeous entertaining deck and backyard that's been stylishly landscaped to combine lush lawns with a splendid firepit zone. A study nook provides the perfect space for children to complete their homework, while a rear bungalow poses the perfect platform for a spacious home office, guest quarters or teen retreat, conveniently equipped with a toilet and split system heating/air conditioning. The four robed bedrooms are split into two zones and include an oversized master bedroom with walk-through-robe to ensuite and private patio, while the three children's bedrooms are nestled together and boast two with built-in-robos and one with walk-in-robe, accompanied by a family bathroom with toilet, powder room and laundry. Freshly painted throughout and highlighted by ducted heating, evaporative cooling, security alarm, solar panels, garden shed plus a double garage with internal access. Enjoying the spoils of a convenient location, near Aquinas College, Great Ryrie Primary School, Marlborough Primary School, Heathmont College, Jubilee Park, Proclamation Park, Aquanation, Ringwood Golf Club, bus services, Ringwood Train Station, Eastland Shopping Centre plus Eastlink.