

8 Hanbury Place, Tamworth, NSW 2340

Sold Residential Land

Wednesday, 3 April 2024

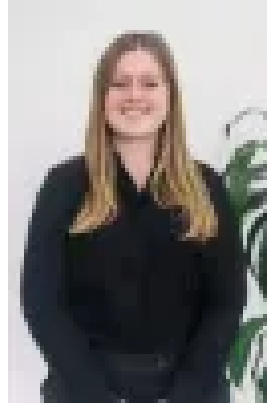
8 Hanbury Place, Tamworth, NSW 2340

Area: 760 m2

Type: Residential Land



Amy Hughes
0267637000



Tara Barwick
0267637000

\$225,000

The perfect 760sqm block of land in desirable The Meadows Estate. Full of potential, this block is fully serviced and ready to build on with room for your dream home, shed or a pool (STCA) whilst still being in close proximity to the CBD, schools, shopping complexes and health services. Contact Amy Hughes today on 0417 666 773 or Tara Barwick on 0447 532 513.