

8 Larrell Close, Eight Mile Plains, Qld 4113

House For Rent

Wednesday, 24 April 2024



8 Larrell Close, Eight Mile Plains, Qld 4113

Bedrooms: 3

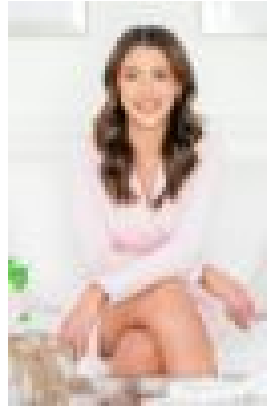
Bathrooms: 1

Parkings: 2

Type: House



Karen Herbert
0733473737



Madeline Walsh
0733473737

\$600 Lowset charmer in quiet Cul-de-Sac

Positioned in a quiet cul-de-sac street, this neat and tidy low-set brick property offers a low maintenance lifestyle in a convenient location. Features You Will Love:- Greeted by the bright, carpeted living area fitted with air-conditioning; sliding doors to access the fully fenced yard- Functional kitchen sits adjacent to the living room, featuring dishwasher, electric cooking + breakfast bar to enjoy casual meals- Master bedroom is queen sized, completed with mirrored built in robes, ceiling fan + private access to the bathroom- Bedrooms 2 + 3 are both generously sized + feature built in robes + ceiling fans- Family bathroom with shower, bathtub + vanity with ample storage space; separate toilet- Internal laundry room with extra linen storage space- Fully fenced yard at rear, plus access to the garden shed- Single lockup garage with internal access

Location and Lifestyle:- 5 minutes to Westfield Garden City giving residents easy access to a huge variety of restaurants, entertainment + specialty shopping- 5 minutes to the Eight Mile Plains bus exchange to reach any Brisbane destination with ease- Located in the Upper Mount Gravatt Primary School + Rochedale State High School catchments- Numerous early learning centres within close proximity- Brampton Street Park located at the rear of the home- Quick access to the major arterials going north or south

NOTE: Applications are unable to be processed until you or someone on your behalf has viewed the property. Please register to inspect.