

8 Ling Pl, Karabar, NSW, 2620

Sold House

Friday, 10 February 2023



THE
PROPERTY
COLLECTIVE

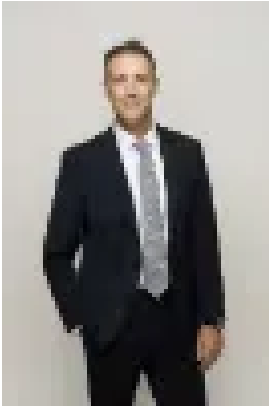
8 Ling Pl, Karabar, NSW, 2620

Bedrooms: 4

Bathrooms: 2

Parkings: 2

Type: House



Jason Maxwell
0416182379

Family bliss, internal and External space and views to the hills !

\$870,000-\$890,000

Bed 4 Bath 2 Car 2

Sensational family space, a safe and secure cul-de-sac backing reserve

868 sqm block and views across to the bushland of Greenleigh are the appealing hallmarks of this welcoming and contemporary 4 bedroom, 2 bathroom residence.

You have two large segregated living areas, one at the front and one at the rear of the home both with external access to your sun-filled veranda that offers spectacular views across to the bushland of Greenleigh Estate.

The kitchen is modern and practical, and delivers fantastic benchtops, excellent counter space, and quality appliances. This kitchen also looks out over a casual meals area which is primed for easy breakfasts and dinners.

The master bedroom is expansive in size and has access to built-in robe storage as well as an ensuite with a large shower. Alongside this is your fourth bedroom or study you decide! While the remaining two bedrooms are off the back-living area and both have built-ins and plenty of room for the kids toys or a study desk.

Outside, an elevated undercover dining space will allow you to enjoy summer meals as you soak in brilliant ranges views, with this property further complemented by large backyard and even a fenced area ideal for dogs, chooks or vege gardens.

The Perks

- Family bathroom with bath tub
- You will be guaranteed year-round comfort with the fully ducted reverse cycle air-conditioning.
- Private cul-de-sac
- Bushland views
- Secure yard complete with 6-foot Colorbond fencing
- Double lock up garage with plenty of off-street parking
- Four bedrooms – three with built-ins

The Numbers:

- 150m to River Drive bus routes
- 1.5km to Karabar Shops (your local supermarket)
- 6-minute (3.5km) drive to Queanbeyan's Riverside Plaza shopping precinct
- 12-minute (12.5km) drive to the Canberra Airport
- Nestled perfectly between Russell Offices and HQJOC (15-minute drive either way!)
- 20-minute drive (19.5km) To Canberra City Centre

Inspections: Open Homes Or by Appointment

Details: Call Jason Maxwell on 0416182379 or email jason@thepropertycollective.com.au