

8 Marina Court, Lara, Vic 3212

McGrath

Sold House

Tuesday, 26 September 2023

8 Marina Court, Lara, Vic 3212

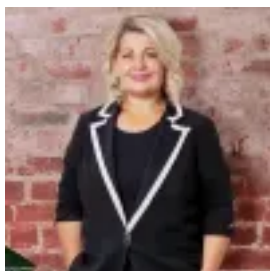
Bedrooms: 4

Bathrooms: 2

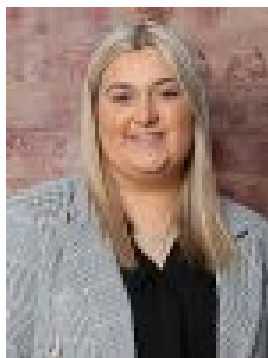
Parkings: 2

Area: 753 m2

Type: House



Jasmin Jurkovic
0421357077



Marissa Maroulis
0447627436

\$850,000

Occupying 753m² (approx.) in a sought-after court, this well-maintained family home delivers an abundance of indoor and outdoor living space for the whole family to enjoy. High ceilings enhance the timeless interiors, while carpet floors are lush underfoot. The open-plan living/kitchen/meals zone opens to a paved alfresco entertaining area with high pitched roof and cafe-style blinds, ensuring year-round versatility and plenty of weekend BBQs. Neat and established gardens surrounded the large backyard, which enjoys a wealth of luscious green grass for the kids and pets to play on. A spacious step-down lounge room presents a second living space to kick back and unwind. The well-equipped kitchen showcases timber cabinetry, stainless steel appliances and a built-in pantry. Excellent location enjoys close proximity to the lake and surrounding walking tracks. The local kindergarten is on your doorstep and an easy walk to Lara Lake Primary School. A short drive to Lara Secondary College (zoned). Nearby access to public transport and Lara Train Station. Approximately a 15-minute drive to Avalon Airport. Superior access to the Geelong Ring Road and Princes Freeway keep you easily connected to Melbourne, Geelong and the Surfcoast.- Kleenmaid double-oven and 900mm gas cooktop, Asko d/washer- Master bed boasts ensuite with corner spa and built-in robes- Additional three bedrooms all include built-in robes- Main bathroom incorporates a bathtub and separate w/c- A separate laundry off the kitchen features external access- Central heating and evaporative cooling maintain comfort- Lockable windows and alarm system provided added security- 20 Solar Panels ensure economical running of the home- Remote double garage has a roller door to the backyard- Fully powered shed provides a functional workshop space