

8 Mckail Crescent, Stirling, ACT 2611



Sold House

Wednesday, 13 September 2023

8 Mckail Crescent, Stirling, ACT 2611

Bedrooms: 4

Bathrooms: 2

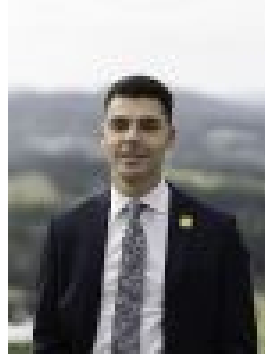
Parkings: 2

Area: 713 m2

Type: House



Alec Brown
0406866007



Kaine Walters
0450146538

\$1,200,000

Enjoying an elevated yet exceedingly private position and spanning a generous and light-filled split-level, this beautifully presented home is as impressive as it is unexpected. Inside is where the personality of the home really comes to life, and where the design features that set it apart are truly showcased. Soaring raked ceilings provide an instant 'wow' as you enter the expansive living area, and it's a theme that continues into the kitchen, enhancing the sense of space that radiates throughout these zones. A nod to the home's c1980's origins, exposed brick and timber features add a lovely texture and warmth to the entire area. Something you'll never tire of are the views across to Mount Stromlo that you'll be afforded from the lounge room, truly priceless and a picture of beauty each and every day. The outdoor entertaining area is another undeniable highlight here and provides the icing on the cake as to the joy this home will provide for many years to come. Property features include:

- Light-filled living, abundant in windows and showcasing views to Mount Stromlo
- Spacious living and dining areas sit beneath soaring timber raked ceilings
- Gas log fireplace and split system a/c are available in the living area
- Modern kitchen with extensive cupboard space, both gas and electric cooktops, double wall oven, breakfast bar and dishwasher
- Adjacent family room provides French door access to the covered entertaining area
- Four bedrooms, each fitted with mirrored built-in wardrobes
- Master bedroom adjoins a large ensuite and has direct access to the backyard
- Main bathroom includes a shower and bathtub, with a separate w/c
- Ducted reverse cycle heating and cooling throughout
- Fully fenced, private yard is perfect for kids with a swing set and plenty of space to play
- Good sized laundry with built-in storage cupboards and outdoor access
- Full roof restoration with 15-year warranty (through to 2035)
- Wifi irrigation, pop-up lawn sprinklers, vegetable garden and shed
- Recently installed wall insulation, roof insulation to R7 and electric roller shutters on western outlook
- Secure double garage
- EER: 2.5
- Living: 160.38sqm & Garage: 39sqm
- Block: 713sqm
- Built: 1985
- Rates: \$3,067pa
- Land Tax: \$5,174pa (Investors only)
- UV: \$668,000 (2022)

Close proximity to:

- Cooleman Court
- Stirling playing fields
- Woden Town Centre
- Stromlo Forest park
- Excellent schools
- Canberra Hospital

Disclaimer: All information regarding this property is from sources we believe to be accurate, however we cannot guarantee its accuracy. Interested persons should make and rely on their own enquiries in relation to inclusions, figures, measurements, dimensions, layout, furniture and descriptions.