

**8 Morris Court, Cotswold Hills, Qld 4350**



**House For Sale**

Wednesday, 10 April 2024

8 Morris Court, Cotswold Hills, Qld 4350

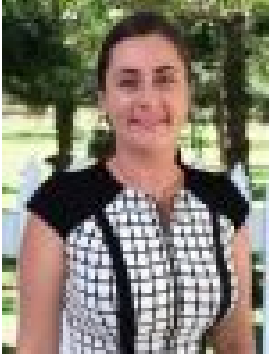
**Bedrooms: 4**

**Bathrooms: 2**

**Parkings: 6**

**Area: 4000 m2**

**Type: House**



Kellie Barridge  
0733537600

## NEW TO MARKET

Kellie Barridge at Ray White is proud to present to the market 8 Morris Court, Cotswold Hills. Positioned within a prestigious high-end acreage enclave, this executive low-set residence sits on an elevated 4,000m<sup>2</sup> of private and immaculately manicured grounds with striking rural and mountain views. With stylish interiors and relaxed modern aesthetics, this large family home really is the ultimate blend of lifestyle and luxury and features 4 generously sized bedrooms, 2 bathrooms and 4 very distinct separate living areas all under roof. The well-appointed chef's kitchen offers the perfect blend of functionality and modern convenience and comes complete with an oversized breakfast bar, an abundance of cupboard space, a walk-in pantry, and a full range of high-end stainless-steel appliances. The home has been intentionally designed to allow for a seamless natural indoor-outdoor flow and boasts an abundance of windows and oversized doors throughout, that allow natural light to spill in from every angle so the owners can enjoy connectivity with their peaceful and picturesque surroundings. The living areas all conveniently open out to either the extravagantly large alfresco patio at the rear of the house, or to the full-length Veranda at the front. In addition to the double lockup garage with internal access, there are two 2-bay sheds located at the rear of the property - perfect for vehicle storage, a workshop, or a teenager's retreat. Features include:- 4 bedrooms with built-in's (walk-in wardrobe to Master Suite)- Both bathrooms generously sized with bathtubs (Ensuite has been recently updated and features a TV on the wall so you can soak in style whilst watching your favourite shows)- Reverse Cycle Air Conditioning in Kitchen/Dining, 2x Living Areas and the Master Bedroom- Spacious Laundry with built-in cabinetry- Modern feature lighting- CrimSafe screens and doors throughout the home, and a security alarm for extra peace of mind- Wrap around veranda- Electric hot water system- Town water and rainwater tanks - Bio-Cycle system- Fully landscaped and fenced 4,000m<sup>2</sup> block- Quiet cul-de-sac location- Elevated house position capturing rural mountain views and breezes- 2x large 2-bay sheds at the rear of the property- 5 Minutes to local shops, dining and schools- Ideal for families, downsizers and investors - Short drive to the Toowoomba Wellcamp Airport- 2 minutes drive to the new Toowoomba North-South Transport Corridor Beautifully presented throughout, this prestigious acreage retreat offers exceptional levels of comfort and privacy and is the perfect home for those looking for unparalleled style close to all the amazing amenities that Toowoomba has to offer. Don't miss out on this opportunity to own one of the most beautiful homes in the highly sought-after suburb of Cotswold Hills. Contact Kellie Barridge on 0422 617 653 today for more information and to schedule a viewing. Disclaimer: We have in preparing this advertisement used our best endeavours to ensure the information contained is true and accurate, but accept no responsibility and disclaim all liability in respect to any errors, omissions, inaccuracies or misstatements contained. Prospective purchasers should make their own enquiries to verify the information contained in this advertisement.