

# 8 Natasha Avenue, Angle Vale, SA 5117

## Sold Residential Land

Wednesday, 20 December 2023



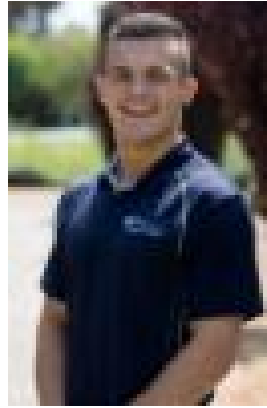
8 Natasha Avenue, Angle Vale, SA 5117

Area: 520 m2

Type: Residential Land



Grant Fielke  
0427300049



Bailey Fielke  
0427716886

## Contact agent

Welcome to 8 Natasha Avenue, Angle Vale. Nestled within the renowned Woodbridge and Rivers Edge Estates is this fantastic 520sqm corner allotment. Facing a peaceful reserve and adjoining well-presented ex-show homes, start your next chapter in your brand new home today! • ? Water Connected • ? Power Connected • ? NBN Available • ? Sewer Connected • ? House and Land Packages Available Contact Grant and Bailey Fielke NOT E There may be some properties where mask wearing will be required for the duration of the inspection due to the safety of high risk individuals. Please follow directions and instructions from our agents at all open inspections and adhere to social distancing of 1.5m at all times where possible. First National Real Estate Peoples' Choice - RLA222770