

8 Riga Avenue, Greenacre, NSW 2190



House For Sale

Tuesday, 30 January 2024

8 Riga Avenue, Greenacre, NSW 2190

Bedrooms: 3

Bathrooms: 1

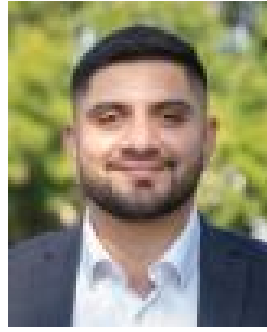
Parkings: 3

Area: 834 m2

Type: House



Mark Saleh
0286685754



Ahmad Elfata
0286685754

AUCTION

Welcoming a bright north-to-rear facing orientation, this beautifully presented home is nestled within a leafy cul-de-sac on a prized 834.7sqm parcel. Devised with low-maintenance living in mind, it presents a flow-through layout with individual living/dining, two bedrooms and an impressive alfresco area. The property holds abundant scope to enhance, renovate or redevelop subject to council approval within a sought-after pocket of Greenacre, just moments from amenities.- Total land size 834.7sqm with opportunity to renovate or redevelop STCA - Living room is enhanced with original timber wall panels and carpet flooring- Low-maintenance backyard provides an ideal space to entertain and gather - All-weather terrace overlooks the completely enclosed and child-friendly yard- Original kitchen is exceptionally maintained with quality appliances, storage - Two good-sized bedrooms with built-ins, master with a mirrored built-in robe - Tidy bathroom presented a large shower and floor-to-ceiling tiles, guest w/c- Spacious internal laundry with storage, soothing neutral colour palette through- Readymade family home or investment opportunity, scope to enhance (STCA)- Single lock-up garage in addition to an extended driveway, off-street parking- Centrally located between Greenacre and Chullora, schools and dining optionsDISCLAIMER: While PACE Property Agents have taken all care in preparing this information and used their best endeavours to ensure that the information contained therein is true and accurate, but accept no responsibility and disclaim all liability in respect of any errors, inaccuracies or misstatements contained herein. PACE Property Agents urges prospective purchasers to make their own inquiries to verify the information contained herein.