

8 RUSSELL COURT, Altona Meadows, Vic 3028

House For Sale

Tuesday, 21 May 2024



8 RUSSELL COURT, Altona Meadows, Vic 3028

Bedrooms: 3

Bathrooms: 2

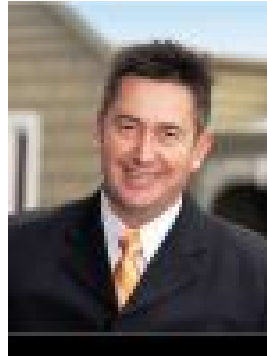
Parkings: 3

Area: 479 m2

Type: House



Peter Weaver
0403536390



Mark Thompson
0403536390

Private Sale \$695,000 / \$750,000

This well-presented family residence positioned in a quiet court ticks all the required boxes and a perfect downsizer or first home. FINER POINTS Three bedrooms master with WIR and ensuite | Modern kitchen with S/S appliances | Central bathroom | Large formal living area with fireplace | Open plan living and dining overlooking rear yard | Ducted heating and split-system cooling | Single carport with plenty of off-street parking | Low maintenance gardens | Private and tranquil backyard complete with pergola, landscaped garden and shed. THESE ARE YOUR NEIGHBOURSSHOPPING - Central Square shopping and that coffee fix - Just over 1km EAT - Too many choices with Central Square only 1km and Pier St Altona 5.0km LIFESTYLE / WELLNESS - Wetlands and Bay trails a short stroll 800m EDUCATION - Altona Green Primary 550m TRANSPORT - 2km to Laverton station and 30mins to CBD FINAL WORD A great opportunity to secure this home located within close proximity to Altona Green Primary, Kindergarten & Children's Centre, Central Square Shopping Centre, R K Richards Reserve, and easy freeway access to the C.B.D. Compass Estate Agents. No BS! Just honest advice and exceptional service.