

8 Stone Street, Blair Athol, SA 5084



Residential Land For Sale

Sunday, 26 May 2024

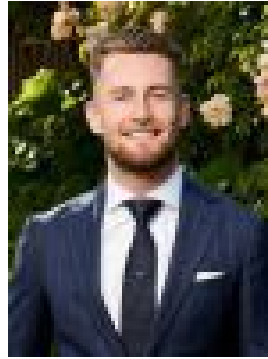
8 Stone Street, Blair Athol, SA 5084

Area: 2963 m2

Type: Residential Land



Damien Fong
0403257665



Brandon Pilgrim
0438807061

Contact Agent

Perfectly located in a quiet street within easy reach of desirable amenities is this 3,199 sqm(approx.) allotment or 4 separate individual allotments in Blair Athol providing the perfect opportunity to build the home of your dreams. Ideally located within easy reach of schools, public transport and desirable amenities. Enfield Primary, Our Lady of the Sacred Heart College, Prospect North Primary and St Gabriel's School are all in the local area. All Allotment Details: Total Land Size: 3,199 sqm (Approx.) 2 Clifton Street Total Land Size: 692 sqm (Approx.) 4 Clifton Street Total Land Size: 697 sqm (Approx.) 8 Stone Street Total Land Size: 905 (Approx.) 1 Robert Street Total Land Size: 905 sqm (Approx.) Ideally located within easy reach of schools, public transport and desirable amenities. Enfield Primary, Our Lady of the Sacred Heart College, Prospect North Primary and St Gabriel's School are all in the local area. Great shopping is available at Coles Blair Athol and the Sefton Plaza, Northpark and Regency Plaza Shopping Centres along with the lifestyle shopping centre on Churchill Road including Bunnings, Aldi and Costco. Public transport is a short walk to Main North Road and there are numerous parks and reserves in the local area, perfect for your exercise and recreation. Zoning information is obtained from www.education.sa.gov.au Purchasers are responsible for ensuring by independent verification its accuracy, currency or completeness. Disclaimer: As much as we aimed to have all details represented within this advertisement be true and correct, it is the buyer/ purchaser's responsibility to complete the correct due diligence while viewing and purchasing the property throughout the active campaign. Property Details: Council | PORT ADELAIDE ENFIELD Zone | GN - General Neighbourhood Land | 3,199 sqm(Approx.) Council Rates | \$TBC pa Water | \$TBC pq ESL | \$TBC pa