

8 Undara Place, Waterford, Qld 4133

House For Sale

Thursday, 13 June 2024



8 Undara Place, Waterford, Qld 4133

Bedrooms: 4

Bathrooms: 2

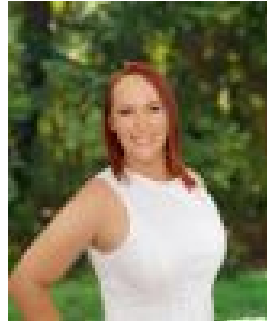
Parkings: 2

Area: 320 m2

Type: House



Eiles Brittany Hunt
0739103776



Niki Blenkins
0421229033

Mid \$700,000's

Welcome to 8 Undara Place, situated in a and vibrant community, this stunning two storey home offers an unparalleled lifestyle. Nestled in a picturesque setting, this family-friendly suburb provides the perfect blend of tranquillity and convenience. With lush green parks, scenic walking trails, and a strong sense of community, this is an ideal place to call home. Step inside this beautifully maintained residence and experience the warmth and comfort it offers. promoted by polished timber flooring and neutral tones, the home exudes a warm and welcoming atmosphere from the moment you arrive. Upstairs offers two spacious living areas which seamlessly flow out to the front balcony or to the back deck, where you can sit back with your feet up and relish the lush garden views. Designed for functional family living the home draws in natural light, the open plan kitchen is complete with stainless steel appliances and is the perfect vantage point to oversee the day-to-day activity of the home. The four bedrooms are well positioned to offer privacy and respite, while the Master bedroom enjoys its own luxurious ensuite. INSIDE- Four well sized bedrooms, the master includes an ensuite - Additional bedrooms all feature built in robes - Large open plan living and dining which opens out to entertaining deck that overlooks the lush backyard. - Modern kitchen, with stone bench top, stainless steel appliances, a breakfast bar, and ample storage. - Contemporary main bathroom equipped with a bathtub, separate shower, and separate w/c. - Polished timber flooring and neutral tones giving elegance and warmth throughout. - Large separate family room with balcony access; ideal for a playroom, home office, or additional living space - Plenty of storage throughout - Air conditioning in the main living area and ceiling fans throughout - Double lock-up garage - Security screens for additional peace of mind. OUTSIDE - Timeless design with great street appeal - Landscaped gardens on a boutique 320m² block, beautifully maintained, offering a serene outdoor retreat. - Fully fenced yard ensuring privacy and safety for children and pets. - Covered portico entry - Wide driveway offering additional parking Located in the heart of Waterford, 8 Undara Place is close to an array of amenities. Enjoy the convenience of nearby shopping centres, reputable schools, and childcare facilities. Spend weekends exploring the local parks, walking trails, and the scenic Logan River. Waterford is strategically positioned with easy access to both Brisbane and the Gold Coast, making it perfect for commuters and those who enjoy the best of both worlds. - 2 min drive to Canterbury College - 3 min drive to Holmview Central Shopping Centre - 4 min drive to Bethania Shopping Village - 5 min drive to Edens Landing State School - 6 min drive to Bethania train station - 9 min drive to Trinity College - 10 min drive to Logan Hospital - 12 min drive to Loganlea State High School - 33 min drive to Brisbane CBD Do not miss out on this fantastic opportunity to own a piece of Waterford's thriving community. Move in ready, get in touch with the Hunt Property team and discover why this is the perfect place to call home. "RE/MAX Revolution Real Estate has diligently ensured that the information provided in this advertisement is accurate and reliable. However, we assume no liability for any errors, omissions, or discrepancies contained herein. Prospective buyers are encouraged to conduct their own independent investigations to verify the details."