

**8 Westbourne Road, Bolwarra, NSW 2320**



**Sold House**

Friday, 1 September 2023

8 Westbourne Road, Bolwarra, NSW 2320

**Bedrooms: 4**

**Bathrooms: 2**

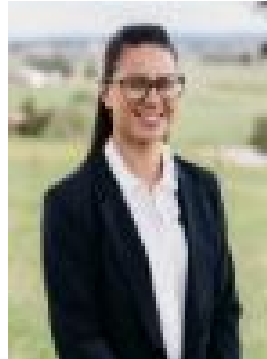
**Parkings: 2**

**Area: 724 m2**

**Type: House**



Chris Henry  
0438636276



Shantala Bemrose  
0249344111

**\$1,700,000**

For exclusive access to River Realty VIP properties please join <http://bit.ly/RiverVIPs> today, or SMS 'RiverVIPs' to 0428 166 755. The Agent Loves!"The owners built this home for their family, with only the highest quality inclusions in mind. This Victorian-inspired residence has all the charm and character of a federation-style home but caters beautifully for the modern lifestyle. With multiple living areas, open fireplaces, a generously appointed kitchen, oversized bedrooms, a large undercover entertaining area and a stunning inground pool. Perfection at its finest!"The LocationImmerse yourself in the tranquil beauty of Bolwarra, a highly sought-after neighbourhood known for its picturesque landscapes, tree-lined streets, and friendly community atmosphere. This magnificent property is ideally situated to take full advantage of the Hunter Valley.Maitland - 4 mins (2.7 km)Stockland Green Hills - 10 mins (8.1 km)Pokolbin - 36 mins (37.1 km)Newcastle CBD - 41 mins (36.9 km)Sydney CBD - 2 hours 5 mins (174 km)The StyleExternally, this striking Victorian-inspired home boasts authentic ornamentation, Adelaide bluestone wall features, and shady verandahs. Inside, marvel at the 3.3m high ceilings, French oak hardwood parquet flooring, and sophisticated marble finishes.The LifeCrafted by Hunter Bespoke Homes, this Grand Manor design is a modern replica of a Victorian masterpiece that marries traditional charm with contemporary comforts, where every space has been thoughtfully designed to offer unparalleled elegance and luxurious living.A formal lounge room provides a sophisticated setting for relaxation or quiet conversations, complete with a gas log fireplace and bay windows, but the heart of the home is found in the open-plan gourmet kitchen:Complete with solid Jarrah hand-made timber cabinets, African black granite benchtops, and a butler's pantry, the space is custom-made to facilitate the creation of culinary delights, and the wide, thoughtfully placed window means you can savour the view of the picturesque gardens and stunning inground saltwater pool while doing so.It's not just cooking that this home has been designed for - entertaining is a breeze thanks to the thoughtfully planned and masterfully curated floor plan.Choose between the inviting living and formal dining room with its open wood-burning fireplace or step outside to the alfresco area, where you can enjoy the warmth of the elevated wood-fired oven and rotisserie. Surrounded by lush gardens and an exquisite pool, this space is perfect for making lasting memories with family and friends.When it's time for a drop of the Hunter Valley's finest, the underground wine cellar - hidden beneath the formal lounge room - boasts storage for around 3,000 bottles, making it the perfect place to store and showcase your extensive wine collection.And at the end of the day, retreat to the luxurious master suite, featuring a premium walk-in robe, recessed ceiling, and private porch, while the elegant ensuite offers a freestanding claw-foot bath, dual washbasins, and a marble vanity.The additional bedrooms offer spacious and comfortable accommodations for family members or guests, and the main bathroom, styled with hand-made solid Jarrah shaving cabinets and a free-standing clawfoot bath, epitomises Victorian elegance.Experience an unparalleled life of luxury and elegance in this bespoke Bolwarra residence, where every detail has been meticulously crafted to provide a seamless blend of Victorian charm and modern convenience.Make 8 Westbourne Road yours today, and secure a future where the historic charm meets contemporary comforts for every tomorrow to come.SMS 8West to 0428 166 755 for a link to the online property brochure.