

8 William Road, Croydon, Vic 3136



Sold House

Thursday, 14 September 2023

8 William Road, Croydon, Vic 3136

Bedrooms: 3

Bathrooms: 1

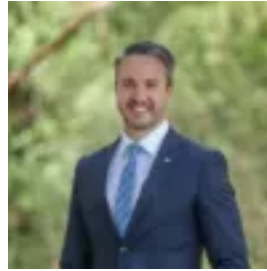
Parkings: 4

Area: 796 m2

Type: House



Sharyn de Vries
0398706211



Joseph Corsi
0398706211

\$970,000

One of Croydon's original tree lined addresses, this parkside home has been renovated to deliver a wonderful place for a family to grow and share the seasons. Host gatherings inside or relax in the numerous garden pockets under an established evergreen elm tree, and in summer make a splash with a fabulous, decked swimming pool. Timber floors and a neutral palette present a home of sophistication with the living room centred around a Eureka wood fireplace for added ambience. Family dining merges with a streamlined kitchen with Caesarstone benchtops and crisp subway splashback. Comprising an Ilve 900mm oven with 6-burner gas cooktop, Siemens dishwasher and large corner storage, pull out pantry drawers, soft-closing cabinetry with feature lighting plus black matte Blanco sink. Even washing dishes isn't such a chore with the peaceful filtered views of the Dandenong Ranges. A French door beckons your outside to undercover decking overlooking the fantastic garden spaces including a BBQ pod, decked open-air alfresco/firepit space and resort-like bathing zone, privately framed by bamboo screening and lush palms. Three restful bedrooms provide built-in robes; Master with double the storage. The bathroom has been spotlessly kept with a spa bath and timber vanity plus separate WC. The home further features gas ducted heating, split system, laundry with built-in storage and external entry, a double carport and ample off-street parking for a caravan/boat or trailer. Abutting Silcock Reserve with access just a few doors down, appreciate the green open space, playgrounds and soccer fields around you. Close to Croydon Central, Main Street cafes and boutique brewery, Town Park, Aquahub and Croydon Train Station is a short walk. Minutes to Eastland, Eastlink, numerous golf courses and the Yarra Valley or Dandenong Ranges.