

8 Zante Grove, Park Holme, SA 5043

NOAKES
NICKOLAS

Townhouse For Sale

Tuesday, 30 April 2024

8 Zante Grove, Park Holme, SA 5043

Bedrooms: 3

Bathrooms: 2

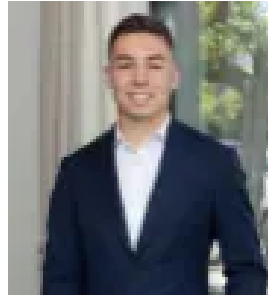
Parkings: 2

Area: 248 m2

Type: Townhouse



Darcy Harcourt
0435756245



Mason Lucks
0881663989

Best Offers By 20/5 (USP)

Best Offers By Monday 20th of May at 10am (Unless Sold Prior). Presenting you with a modern abode nestled in Park Holme's vibrant street, 8 Zante Grove. Maintained to the highest standards, the property is immaculate, both inside and out. It effortlessly caters to a range of buyers including families, first home buyers, or savvy investors looking to add to their portfolio. This home provides a contemporary setting with some classic elements. It blends modern convenience with a relaxed, comfortable atmosphere. The distinct design is a testament to tasteful architecture while still maintaining functionality and practicality in its design. This property comes with a promise of comfort and convenience packed in a modern package. It awaits the lucky buyer who appreciates quality, location, and value. Key features of the property:- Generously proportioned 3-bedroom home- Balcony for outdoor living and entertaining- 2.7m high ceilings- En-suite bathroom attached to the master bedroom- Split level design creating separate living zones- Open-plan living for seamless interaction- A blend of laminate and carpet flooring for comfort and elegance.- A strikingly rendered facade that sets an impressive tone on arrival- Modern kitchen equipped with a gas cooktop, dishwasher, and stainless appliances for easy meal preparation- Ducted reverse cycle air conditioning ensuring year-round indoor comfort- Secure single garage for your vehicle- Ample storage solutions with a walk-in robe, linen closet, and built-in robes- Instant gas hot water system and separate laundry for added convenience- 2000L rainwater tank- A desirable school zoning for Hamilton Secondary College- Proximity to amenities; a 5-minute drive to Brighton Beach and Marion Shopping Centre- A short walk from the serene Oaklands Wetland Reserve- Kurralta Park Shopping Centre a few hundred meters away- Easy access to public transport with Marion Train Station within walking distance Land Size: 248sqm Frontage: 8.7m Year Built: 2014 Title: Community Council: City of Marion Council Rates: \$1667 PASA Water: \$187.75 PQES Levy: \$145 PA Disclaimer: all information provided has been obtained from sources we believe to be accurate, however, we cannot guarantee the information is accurate and we accept no liability for any errors or omissions. If this property is to be sold via auction the Vendors Statement may be inspected at Level 1, 67 Anzac Highway, Ashford for 3 consecutive business days and at the property for 30 minutes prior to the auction commencing. RLA 315571.