

8 Zephyr Close, Ringwood, Vic 3134



Townhouse For Sale

Tuesday, 28 November 2023

8 Zephyr Close, Ringwood, Vic 3134

Bedrooms: 2

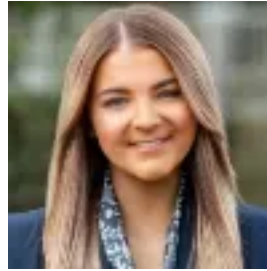
Bathrooms: 2

Parkings: 1

Type: Townhouse



Chris Watson
0398798827



Olivia Mackie
0398798827

\$600,000 - \$660,000

THE PROPERTY Resting within an exclusive complex distinguished by its own street address, this stunning designer townhouse delivers in quality and convenience with the very best of Ringwood at your doorstep. Spread across two levels of impressive architecture and sleek polished finishes, a sense of luxury is immediately apparent. The light and bright living and dining domain is situated on the first floor, unified by a sleek modern kitchen with stone surfaces and premium SS appliances perfect for all cooking connoisseurs. Glass sliding doors reveal a large sun-splashed balcony ensuring an effortless indoor to outdoor integration and making entertaining effortless all year-round. Two bedrooms spread across both levels, featuring a luxe master with built-in robe and en-suite, with a second robed bedroom surrounding a lavish main bathroom with oversized shower. Added features include a low-maintenance courtyard, euro laundry, single auto garage, split system heating and cooling and a spectacular premium position in the heart of Ringwood.

THE FEATURES- Sparkling double storey two-bedroom, two-bathroom townhouse- Light-filled living and dining domain with skylights and hardwood floors- Sparkling modern kitchen with stone surfaces and premium ss appliances- Generous master bedroom boasts BIR storage & chic ensuite- One further bedroom with dual built-in robes- Lavish main bathroom flaunts an oversized shower, vanity & toilet- Single auto garage with internal access- European laundry facilities- Split system heating and cooling

THE LOCATION Adding to the home's long list of desirable inclusions is a spectacular premium address, situated only a short stroll from Ringwood Railway Station, Eastland Shopping Centre and Costco, as well as a host of local schools including Ringwood Heights Primary and parkland featuring Mullum Mullum Creek Trail.