

80 Arkaba Road, Aldgate, SA 5154

HARRIS

House For Sale

Thursday, 7 March 2024

80 Arkaba Road, Aldgate, SA 5154

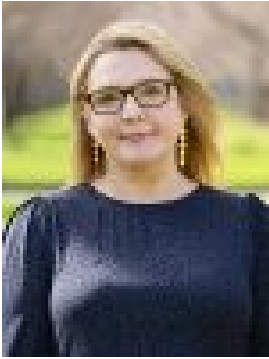
Bedrooms: 6

Bathrooms: 3

Parkings: 4

Area: 2487 m2

Type: House



Taryn Varcoe
0405591561



Arabella Hooper
0883394222

Contact Agent

Best Offers By 12noon Wednesday 27th March (unless sold prior) Set back from Arkaba Road into its enchanting natural environment this six-bedroom architectural home stands out as something special the moment you set eyes on the wide frontage and striking angles of its elevated facade. Built in 2001, this one-of-a-kind home is perched at the apex of a largely flat parcel to embrace sunlight all day and draw you outdoors to enjoy the synthetic tennis court at the rear. Ingeniously forged into two distinct wings, there's a natural flow from one space to the next. Set on one level throughout, the floorplan places four bedrooms in one wing giving the kids - and your home-run business - somewhere to thrive, away from the guest and master bedrooms at the opposing end. Central to the home are two large light-filled living spaces that allow you to mingle or separate as the mood takes you. With stainless steel benchtops, integrated appliances, clever storage solutions and soothing green cabinetry, the conversation-starting open-plan kitchen epitomises a home that is supremely functional, bold and stylish. This comfortable haven boasts numerous French doors and large, double-glazed windows which invite the outside world in. Warmed by underfloor heating and cooled by ceiling fans in every room this sensitively designed home will keep you at the perfect temperature all year round. Whether it's the corrugated metal ceilings that follow a raked trajectory, the exposed steel rafters, custom doors or picture windows, this is an architectural masterclass in creating a spacious, calm and welcoming space that merges seamlessly into its lush Hills setting. More to love: - Set on one of Aldgate's most beautiful streets and hidden from the passing world - Architecturally designed for a large family who love to entertain en masse - Flexible floorplan with multiple living zones - Kids' wing features a retreat, four huge bedrooms, secret loft, bathroom and external access - Master wing features two bedrooms, both with ensuite and walk in robes, and a second loft - French doors open to the courtyard from the main bedroom, kitchen, and living spaces - Full-size synthetic tennis court and paved entertainer's patio to rear - Double garage with internal access - Double carport and additional off-street parking suitable for cars, trailer and caravan - Space-saving European-style laundry - Gas cooktop, dishwasher and integrated fridge/freezer - Underfloor heating throughout - Double glazed windows throughout - Two lofts for storage and/or play areas - Established, water wise gardens with automatic watering system - 3 minute walk to Stirling East Primary School - 15 minute walk to Stirling and 20 minute drive to the CBD - And much more Specifications: CT / 5638/575 Council / Adelaide Hills Zoning / RuN Built / 2001 Land / 2487m² (approx) Council Rates / \$2,929.40pa Emergency Services Levy / \$259.20pa SA Water / \$411.33pq Estimated rental assessment / \$1,000 - \$1,100 per week / Written rental assessment can be provided upon request Nearby Schools / Stirling East P.S, Aldgate P.S, Crafers P.S, Bridgewater P.S, Heathfield P.S, Heathfield H.S, Oakbank School, Urrbrae Agricultural H.S Disclaimer: All information provided has been obtained from sources we believe to be accurate, however, we cannot guarantee the information is accurate and we accept no liability for any errors or omissions (including but not limited to a property's land size, floor plans and size, building age and condition). Interested parties should make their own enquiries and obtain their own legal and financial advice. Should this property be scheduled for auction, the Vendor's Statement may be inspected at any Harris Real Estate office for 3 consecutive business days immediately preceding the auction and at the auction for 30 minutes before it starts. RLA | 22640