

**80 Stephen Drive, Woonona, NSW 2517**

molenaar + mcneice

**House For Rent**

Saturday, 13 April 2024

80 Stephen Drive, Woonona, NSW 2517

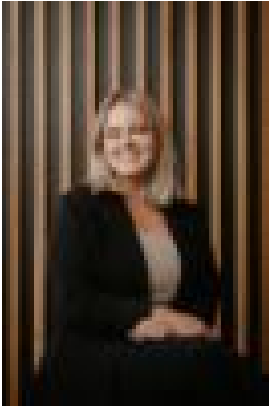
**Bedrooms: 4**

**Bathrooms: 2**

**Parkings: 1**

**Area: 841 m2**

**Type: House**



Hilary Moy  
0242289758



Erin McPhillips  
0242289758

**\$1000 per week**

space | private | style Tastefully presented with elevated views to the ocean, this expansive home offers peaceful family living nestled in a quiet leafy cul-de-sac. Renovated to maximise family functionality and effortless entertainment both indoors and outdoors, this home is ready to move in and enjoy. what you will love... > ocean views from an elevated and generous 841m2 block> versatile tri-level floor plan, polished timber floorboards > open plan kitchen living dining flows out to back courtyard> contemporary kitchen with ample storage and gas cooking > main bedroom features ceiling fan and walk in wardrobe > chic ensuite with checkerboard tiles and clawfoot bathtub > two other bedrooms all appointed with built in wardrobes > two separate east-facing balconies enjoying ocean views> outdoor dining, in-built seating and firepit plus garden shed > beautifully landscaped tropical gardens and leafy surrounds> deck viewing platform positioned at the top of the backyard > positioned on quiet no through road > bushland setting while only 2 minutes to Woonona village > family friendly community by the sea within an hour of Sydney> 12 month lease> no pets will be considered"find a better way to live"m x m = ;)\*\*Please enquire to register your interest to see available open times\*\*