

80 The Scenic Road, Killcare Heights, NSW 2257

Prestige
BY PROPERTY CENTRAL

House For Sale

Friday, 10 November 2023

80 The Scenic Road, Killcare Heights, NSW 2257

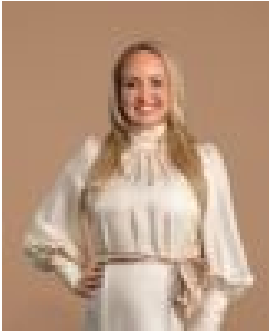
Bedrooms: 5

Bathrooms: 3

Parkings: 2

Area: 714 m2

Type: House



Adrienn Stenner

Contact Agent

Designed to make the most of breathtaking coastal vistas stretching from Palm Beach to Manly, this dual-living family residence offers the epitome of luxuriously relaxed living. Beautifully crafted with incredible attention to detail, this bespoke residence offers two fully self-contained levels, each equipped with private quarters, gourmet kitchens, and breathtaking living and entertaining zones with a distinct sense of style. Perfectly set just minutes from the Coast's most pristine beaches, the wild beauty of Bouddi National Park, and an incredible selection of waterfront eateries and activities at beautiful Hardys Bay, this unique home offers a lifestyle unlike any other. Features include:- Bespoke Coastal sanctuary occupies a blue-chip address with exceptional ocean views across to Palm Beach and Manly.- Opulent upper level offering exceptional views and a dynamic sequence of living spaces, from a commercial-grade, galley-style kitchen and dedicated dining/library to the elevated main living zone, seamlessly connecting out to a superb timber deck taking in Coastal views and breezes. This level also offers two large bedrooms, a walk in wardrobe, an indulgent two-way bathroom with heated marble floor, and a bonus guest powder room.- Spacious lower level offering three bedrooms, a stylish three-way bathroom, a second guest bathroom, infrared sauna, a sleek gourmet kitchen, galley laundry, a "hidden" wine cellar (with a capacity for 1,100 bottles), and magnificent living spaces including a breathtaking dining room with floor-to-ceiling glazing bringing in lush garden views.- Artfully designed to integrate beautiful natural surrounds while catering to every season, with the option to relax outdoors and enjoy the views or retreat indoors and enjoy cosy bioethanol fireplaces (one on each level).- Versatile floor plan presenting a sought-after dual living scenario, offering two fully self-contained levels, each with their own separate access points and outdoor entertaining spaces. Fantastic for large/extended family living or exploring superb additional income opportunities in this sought-after lifestyle suburb- Gently sloping 714m² block with easy-care grounds and gardens. - DA plans for a rooftop garden and bar with elevator access available upon request. - Council Rates: \$2,614.45 pa.- Water Rates: \$1,144.72 pa. A rare offering within this tightly held area, this unique address offers the option to step outside and stroll to 'Bells at Killcare' or jump in the car and explore the incredible range of beaches, bays, and bushwalks on offer. Killcare Beach and Putty Beach are less than a 5-minute drive (or a brisk 30-minute walk!) along with access to one of the Coast's most incredible national parks (Bouddi National Park), renowned for its spectacular views from its clifftop trails. When you're not swimming, surfing, or exploring, head to Hardys Bay to experience a selection of trendy eateries, boutique stores, an art gallery, and a picturesque waterfront perfect for picnics, boating, or kayaking. Properties of this scope, calibre, and position are far and few between. For further details or to secure your inspection, call Adrienn Stenner today on 0414 729 453.