

802/15 Bowes Street, Phillip, ACT 2606

LUTON

Apartment For Rent

Tuesday, 2 April 2024

802/15 Bowes Street, Phillip, ACT 2606

Bedrooms: 1

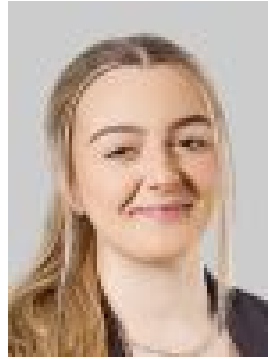
Bathrooms: 1

Parkings: 1

Type: Apartment



Kaitlyn Taylor
0476184829



Alyssa Poretti
0457864941

\$490 pw

This beautiful one bedroom apartment in Grand Central Towers is ready for you to start enjoying. Offering an open-plan living with floor to ceiling windows capturing an abundance of natural light, and opening up to the balcony allowing for more entertaining space. The master bedroom has a built-in wardrobe along with access out to the balcony perfect for morning coffees. Everything you could possibly want will be at your doorstep in this beautiful apartment with the complex offering a pool, gym and so much more. Unwind by the reflection pond, Walk to Westfield, an abundance of local restaurants or unwind at the nearby parks. This apartment offers a easy care lifestyle in the heart of Woden. Features SMEG ceramic cooktop, rangehood, oven and dishwasher Gas hot water Dryer Balcony area Reverse-cycle split system air conditioning to living room One car space Floor-to-ceiling double glazed windows Grand Central Towers Exclusive Amenities and Resident-only Facilities: Rooftop retreat with reflection pond Pool, gymnasium, residents lounge, wine cellar and library Car wash Available 19th April 2024 EER: 6 The property is exempt from the minimum ceiling insulation standard. Applicants are required to seek consent from the landlord to keep pets on the premises. **THINK THIS COULD BE YOUR NEW HOME?** 1. Click on the "BOOK INSPECTION" button 2. Register your information and be kept informed of current or future opens via sms or email 3. If you do not register, we are unable to inform you of any time changes, cancellations or further inspection times Disclaimer: Please note that while all care has been taken regarding general information and marketing information compiled for this rental advertisement, Luton Properties does not accept responsibility and disclaim all liabilities in regard to any errors or inaccuracies contained herein. We encourage prospective tenants to rely on their own investigation and in-person inspections to ensure this property meets their individual needs and circumstances.